

**REX**LiTE<sup>®</sup>

2020  
ISSUE

**FISHBONE Design & REXLITE®**  
*Lighting Design . Lighting Products . Smart Home*

“Environment Protection” and “Land Identity” are REXLITE 's core concepts.

**REXLITE®** dedicates to reveal the possibility and flexibility of “lighting” by making use of green technology and taking innovation and continuity into considerations. We believe lighting design can create different atmosphere in a room and advance the quality of life.

**REXLITE®**

REXLiTE is established in 2005 and has been committed to developing high-quality LED lighting products and smart home control systems for over ten years. We are enthusiastic about managing lighting to change the appearance of a space and convey atmospheres of spaces.

“Environment Protection” and “Land Identity” are REXLiTE’s core concepts. The design, development and production are all taken place in Taiwan and 90% of materials and components are supplied by Taiwanese suppliers and environmental-friendly. We keep our words in executing the concept of environment protection and promise to protect our land with our R&D capacity and technical innovation ability.

In addition to making professional and high-quality lighting products, REXLiTE also dedicates in the research and education of architectural lighting to create better quality of our lives. We reveal the possibility and flexibility of “lighting” by making use of green technology and taking innovation and continuity into considerations.

We has attained a robust relationship and reputation from Architects, Interior Designers and commercial clients. Leading the lighting market is our mission and top priority.

We are proud of our accomplishments so far. Come and explore our world!



# A lighting brand with background in construction and interior design

**REX LITE**<sup>®</sup> Your professional partner  
Lighting & Control system by FISHBONE was founded in 2005.

## Our Strength

Lighting design & solutions

---

Design, research, manufacture  
LED luminaires, lighting control systems

## Professional Research

Create comfortable lighting ambience

---

Light pollution prevention  
Smart home control systems  
Integration of natural lighting with artificial lighting

**REX LITE**<sup>®</sup>

**REXLiTE<sup>®</sup>** Light and Energy Quality

## Environment Protection

- Reduce Increase energy efficiency by professional design
  - Reuse Increase product life by materials sourcing and quality control
  - Recycle 99% recyclable materials
  - Replace Waste prevention with product unification
- 

## Land Identity

- 95% Components made in Taiwan
- 100% Brand based in Taiwan
- 100% Design, research, manufacture in Taiwan
- 100% Professional service

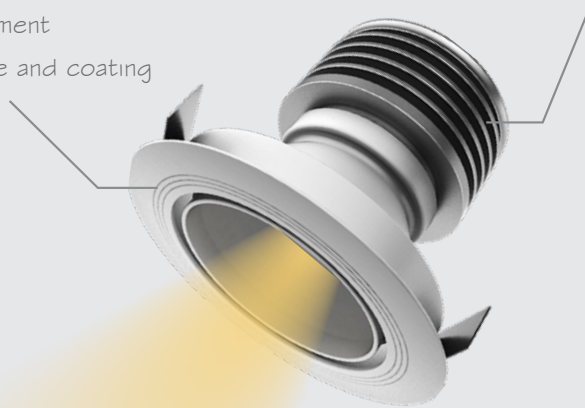
**REXLiTE<sup>®</sup>**

## Material Selection / Production Processing

- Anti-aging treatment
- Fine finish surface and coating

## Efficient Heat dissipation

- Reduce energy consumption
- Increase product life-cycle



## Ra>90 High CRI Soft light / Soft light color

- Protect eyes comfort glare
- Enhance the perceptions of mood in spaces
- More natural color

R a > 9 0	Light quality for museum
Low glare	Professional optical design
Dimmable	Optional order
Wide range	For different needs
Professional	Longer product life-cycle Design

**REXLITE**®

## Brand we distribute

**CASAMBI**

**TCI** LED  
professional led applications

**GLOBAL** TYPE



**STEAB**

Distributor in  
Taiwan

**t** **techno**

**REXLITE**

We select lighting fixtures which are environment-friendly  
and increase the aesthetic quality of spaces.

# Our Partners

## Vehicle Showroom

ASTON MARTIN  
BENTLEY  
BUGATTI  
McLaren  
BMW

QATAR Bank  
K.K FOOD (McDonald's)  
RICH BIKE  
PFI Taiwan  
White Horse  
PEI DAH HSIN GROUP

Construction & Development  
Yuanlin Construction  
JIUH HORNG CONSTRUCTION  
INDUSTRIAL  
CK ROYAL CONSTRUCTION  
LEO-CONSTRUCTION

## Hotel/Restaurant

TRUMP RESIDENCES  
Qatar Al Wakra HOTEL  
Qatar ISLAMIC HOTEL  
INDIGO HOTEL  
Taichung Harbor HOTEL  
CK Lee Garden  
HappinessBanquetHall  
ABOKU

Shopping Center  
HOTEL V  
BAZAAR  
Chi Wu Dao Cultural &  
Creative Center

## Boutique

BIS IN DEI  
Glasses Boutique  
CATH KIDSTON  
LACOSTE  
MCS  
(MARLBORO CLASSICS)  
VIVIENNE WESTWOOD  
TED BAKER  
TORY BURCH  
RADLEY LONDON  
Manimekko





REXLITE has attained a robust relation and reputation from Architects, Interior Designers, and commercial clients.

Leading the lighting market is always our mission and priority. We are proud of our profession and service, so don't hesitate and welcome to explore us more.

**REXLITE**<sup>®</sup>

FISHBONE Design Team JAN. 2020



**M9L**  
REXMode



**REX**LITE®

Origin : Taiwan

Note : Open Ø80 x HG5 mm

Color : Black / White

Beam Angle : Spotlight, 10° / 24° / 38°

Dimension : Ø89 x HG60 mm

LED Source : NICHIA LED

LED Specs : Ra  $\geq$  90 LM80 2,700K ~ 5,000K R9 > 50

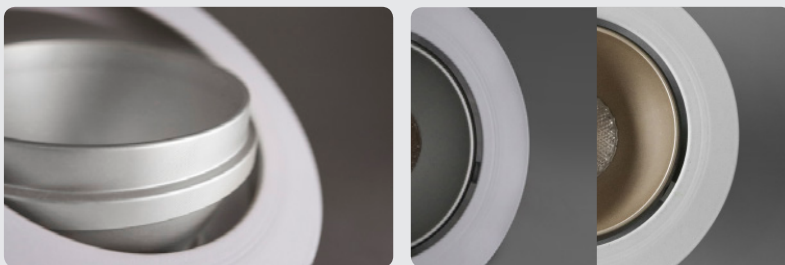
Color Tolerance Adjustment : SDCM  $\leq$  2

Luminous Flux : 1,000 Lm

Power Consumption : 9W



**M9M**  
REXMode



**REX**LiTE®

Origin : Taiwan

Note : Open Ø80 x H80 mm

Color : Black / White

Beam Angle : Spotlight, 10°

Dimension : Ø89 x H75 mm

LED Source : NICHIA LED

LED Specs : Ra  $\geq$  90 LM80 2,700K ~ 5,000K R9>50

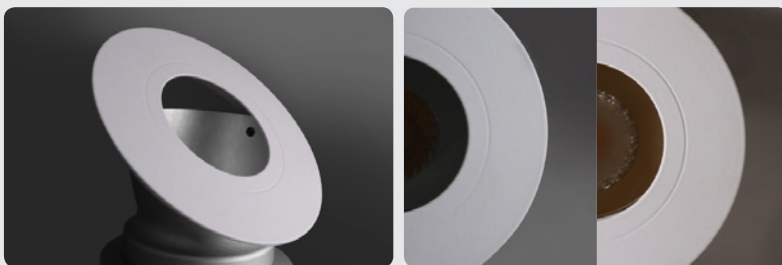
Color Tolerance Adjustment : SDCM  $\leq$  2

Luminous Flux : 940 Lm

Power Consumption : 9W



M9S  
REXMode



REX*L*ITE®

Origin : Taiwan

Note : Open Ø65 x H80 mm

Color : Black / White

Beam Angle : Spotlight, 10°

Dimension : Ø75 x H75 mm

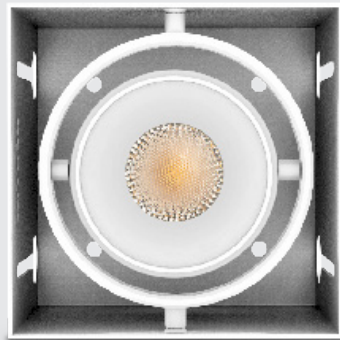
LED Source : NICHIA LED

LED Specs : Ra  $\geq$  90 LM80 2,700K ~ 5,000K R9>50

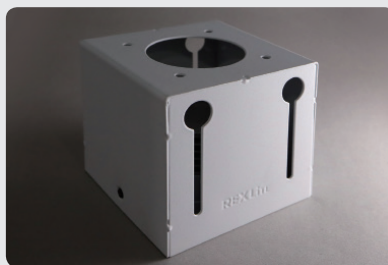
Color Tolerance Adjustment : SDCM  $\leq$  2

Luminous Flux : 720 Lm

Power Consumption : 9W



M9-N1 / N2 / N3  
REXMode



**REX**LiTE®

Origin : Taiwan

Color : Black / White

Beam Angle : Spotlight, 10° / 24° / 38°

Dimension : L 95 × W97 × H90 mm

L190 × W97 × H90 mm

L285 × W97 × H90 mm

LED Source : NICHIA LED

LED Specs : Ra ≥ 90 LM80 2,700K ~ 5,000K R9>50

Color Tolerance Adjustment : SDCM ≤ 2

Luminous Flux : 1,000 Lm / 2,000 Lm / 3,000 Lm

Power Consumption : 9W / 18W / 27W

Bore Dimension : L 97 × W97 × H95 mm

L192 × W97 × H95 mm

L287 × W97 × H95 mm

Note : Low Glare

Two Axis Rotary



# REXCypher Series

05



C5  
REXCypher



**REXLITE**®

Origin : Taiwan

Color : White / Black

Beam Angle : Flood

Dimension :  $\varnothing 150 \times H36$  mm

LED Source : NICHIA LED

LED Specs :  $R_a \geq 90$  LM80 2,700K ~ 5,000K  $R_9 > 50$

Color Tolerance Adjustment :  $SDCM \leq 3$

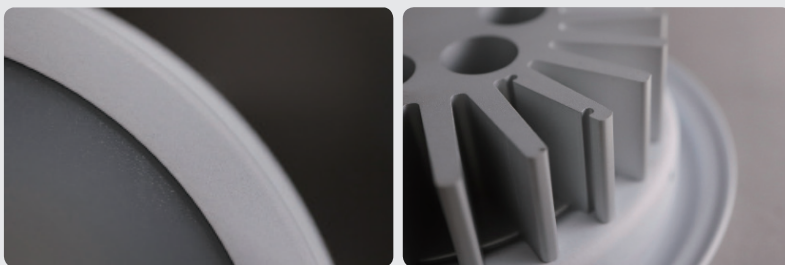
Luminous Flux : 1,520 Lm

Power Consumption : 14W

Note : Open  $\varnothing 135 \times H40$  mm



C1  
REXCypher



**REXLITE**®

Origin : Taiwan

Note : Open  $\varnothing$ 100 x H45 mm

Color : White / Black / Aluminum

Beam Angle : Flood

Dimension :  $\varnothing$ 111 x H40 mm

LED Source : NICHIA LED

LED Specs :  $R_a \geq 90$  LM80 2,700K ~ 5,000K  $R_9 > 50$

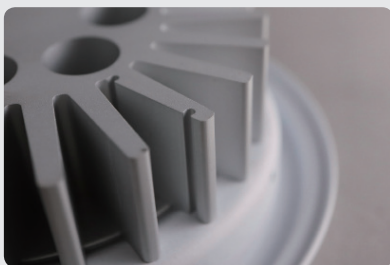
Color Tolerance Adjustment : SDCM  $\leq 3$

Luminous Flux : 820 Lm

Power Consumption : 8.5W



A1  
REXArtem



**REX**LiTE®

Origin : Taiwan

Note : Open Ø100 x H40 mm

Color : White / Black / Aluminum

Beam Angle : AR111 Spotlight, 25°

Dimension : Ø111 x H35 mm

LED Source : NICHIA LED

LED Specs : Ra  $\geq$  90 LM80 2,700K ~ 5,000K R9>50

Color Tolerance Adjustment : SDCM  $\leq$  3

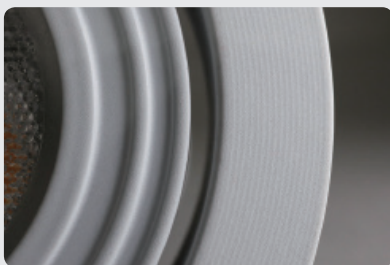
Luminous Flux : 700 Lm

Power Consumption : 8.5W





M5  
REXMode



**REX**LITE®

Origin : Taiwan

Note : Open  $\varnothing 70 \times H50$  mm

Color : Black / White / Aluminum

Beam Angle : Spotlight,  $25^\circ / 40^\circ$

Dimension :  $\varnothing 80 \times H45$  mm

LED Source : NICHIA LED

LED Specs :  $R_a \geq 90$  LM80 2,700K ~ 5,000K  $R9 > 50$

Color Tolerance Adjustment :  $SDCM \leq 3$

Luminous Flux : 475 Lm

Power Consumption : 5.5W



M2  
REXMini



**REX**LITE®

Origin : Taiwan

Note : Open  $\varnothing$ 45 x H35 mm

Color : Black / Aluminum

Beam Angle : Spotlight, 25°

Dimension :  $\varnothing$ 49 x H30 mm

LED Source : NICHIA LED

LED Specs : Ra  $\geq$  90 LM80 2,700K ~ 5,000K R9>50

Color Tolerance Adjustment : SDCM  $\leq$  3

Luminous Flux : 100Lm

Power Consumption : 1.5W



QA1-N1 / N2 / N3  
QubicArtem

**REXLITE**®



Origin : Taiwan

Color : Black / White

Beam Angle : Spotlight, 25°

Dimension : L150 × W150 × H100 mm

L300 × W150 × H100 mm

L450 × W150 × H100 mm

Luminous Flux : 700 / 1,400 / 2,100 Lm

Power Consumption : 8.5 / 17 / 25.5 W

Bore Dimension : L152 × W152 × H105 mm

L302 × W152 × H105 mm

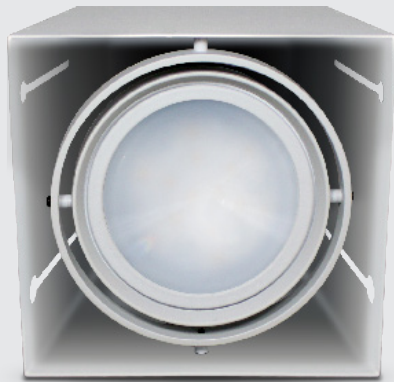
L452 × W152 × H105 mm

Note :

LED Source : NICHIA LED

LED Specs : Ra ≥ 90 LM80 2,700K ~ 5,000K R9>50

Color Tolerance Adjustment : SDCM ≤ 3



QC1-N1 / N2 / N3  
QubicCypher

**REXLITE**<sup>®</sup>



Origin : Taiwan

Color : Black / White

Beam Angle : Flood

Dimension : L150 x W150 x H100 mm

L300 x W150 x H100 mm

L450 x W150 x H100 mm

Luminous Flux : 820 Lm / 1,640 Lm / 2,750 Lm

Power Consumption : 8.5W / 17W / 25.5W

Bore Dimension : L152 x W152 x H105 mm

L302 x W152 x H105 mm

L452 x W152 x H105 mm

Note :

LED Source : NICHIA LED

LED Specs : Ra  $\geq$  90 LM80 2,700K ~ 5,000K R9>50

Color Tolerance Adjustment : SDCM  $\leq$  3

# QubicCypher Series



QC9N  
QubicCypher

REXLITE®



Origin : China

Color : White / Black

Beam Angle : 24°

Dimension : Ø 100 × H100 mm

LED Specs : Ra  $\geq$  90 3,000K / 4,000K

Color Tolerance Adjustment : SDCM  $\leq$  3

Luminous Flux : 650 Lm

Power Consumption : 9W

Note :

# QubicCypher Series



QC16N  
QubicCypher

REXLITE®



Origin : China

Color : White / Black

Beam Angle : 24°

Dimension : Ø 134 × H123 mm

LED Specs : Ra  $\geq$  90 3,000K / 4,000K

Color Tolerance Adjustment : SDCM  $\leq$  3

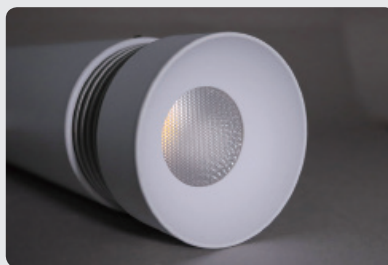
Luminous Flux : 1200 Lm

Power Consumption : 16W

Note :



M9-T  
REXMode



**REX**LITE®

Origin : Taiwan

Color : Black / White

Beam Angle : Spotlight, 10° / 24° / 38°

Dimension : Ø60 x W185 x H150 mm

LED Source : NICHIA LED

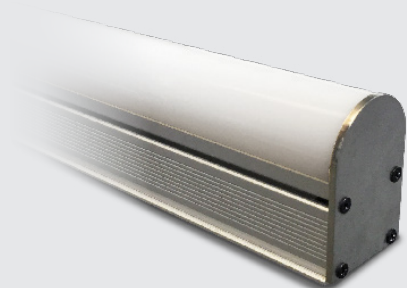
LED Specs : Ra  $\geq$  90 LM80 2,700K ~ 5,000K R9>50

Color Tolerance Adjustment : SDCM  $\leq$  2

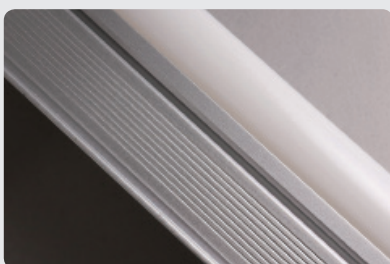
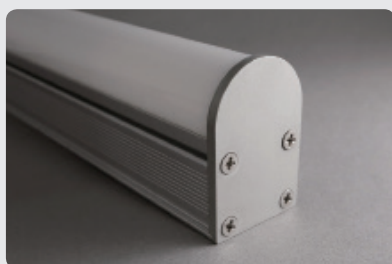
Luminous Flux : 1,000 Lm

Power Consumption : 9W

Note : 2 / 4 / 6 wires tracking system



E1R / E2R / E3R / E4R  
IP68  
REXEmi



**REXLITE**®

Origin : Taiwan

Color : Black / Aluminum

Beam Angle : Linear Flood Light

Dimension : L 300 × W32 × H47 mm

L 500 × W32 × H47 mm

L 1,000 × W32 × H47 mm

L 1,500 × W32 × H47 mm

LED Source : NICHIA LED, RGB in one

LED Specs : R : 850 mcd / 550nm ~ 670nm @20mA

G : 2,000 mcd / 430nm ~ 640nm @20mA

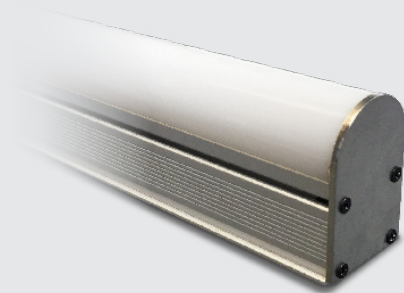
B : 400 mcd / 400nm ~ 570nm @20mA

Power Consumption : 14W / 23W / 46W / 68W

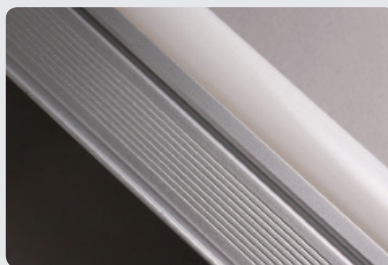
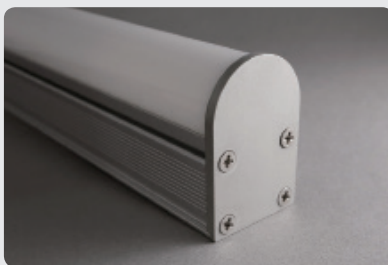
Note : Heat Sink Temp. <70°C

DMX Control





E1W / E2W / E3W / E4W  
IP68  
REXEmi



**REX**LITE®

Origin : Taiwan

Color : Black / Aluminum

Beam Angle : Linear Flood Light

Dimension : L 300 × W32 × H47 mm

L 500 × W32 × H47 mm

L1,000 × W32 × H47 mm

L1,500 × W32 × H47 mm

LED Source : NICHIA LED

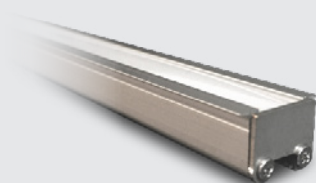
LED Specs : Ra ≥ 90 LM80 2,700K ~ 5,000K R9>50

Luminous Flux : 300 Lm / 500 Lm / 1,000 Lm / 1,500 Lm

Power Consumption : 5W / 8W / 16W / 24W

Note : Heat Sink Temp. < 70°C

DMX Control



RN105 / RN110 / RN115 / RN120  
REXNephia



**REX**LITE®

Origin : Taiwan

Color : Black / Aluminum

Beam Angle : Linear Light, Flood, Embedded

Dimension : L 507 × W15 × H10 mm

L1,007 × W15 × H10 mm

L1,507 × W15 × H10 mm

L2,007 × W15 × H10 mm

LED Source : NICHIA LED

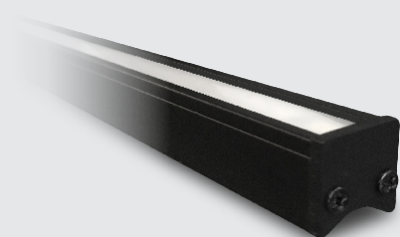
LED Specs : Ra ≥ 90 LM80 2,700K ~ 5,000K R9>50

Color Tolerance Adjustment : SDCM ≤ 3

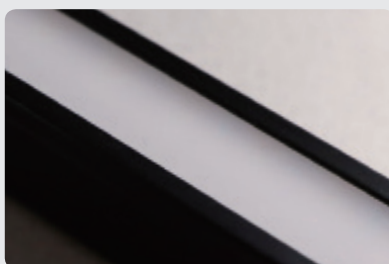
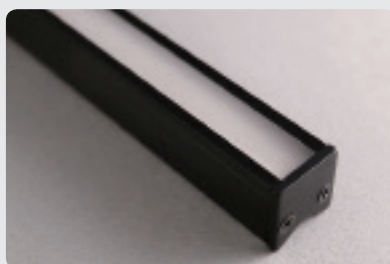
Luminous Flux : 400 Lm / 800Lm / 1,200Lm / 1,600Lm

Power Consumption : 3.5W / 7W / 10.5W / 14W

Note : Open L × W | 1.8 × H > 18mm



RN205 / RN210 / RN215 / RN220  
REXNephia



**REX**LITE®

Origin : Taiwan

Color : Black / Aluminum

Beam Angle : Linear Light, Flood, Embedded / Suspension

Dimension : L 509 x W13.5 x H14.2 mm

L1,009 x W13.5 x H14.2 mm

L1,509 x W13.5 x H14.2 mm

L2,009 x W13.5 x H14.2 mm

LED Source : NICHIA LED

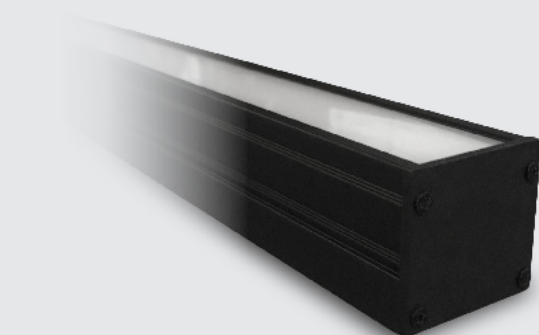
LED Specs : Ra  $\geq$  90 LM80 2,700K ~ 5,000K R9>50

Color TolCerance Adjustment : SDCM  $\leq$  3

Luminous Flux : 400 Lm / 800Lm / 1,200Lm / 1,600Lm

Power Consumption : 3.5W / 7W / 10.5W / 14W

Note : Open L x W13.5 x H>23mm



RN405 / RN410 / RN415 / RN420  
REXNephia



**REX**LITE®

Origin : Taiwan

Color : Black / Aluminum

Beam Angle : Linear Light, Flood, Embedded / Suspension

Dimension : L 509 × W31 × H30 mm

L1,009 × W31 × H30 mm

L1,509 × W31 × H30 mm

L2,009 × W31 × H30 mm

LED Source : NICHIA LED

LED Specs : Ra ≥ 90 LM80 2,700K ~ 5,000K R9>50

Color Tolerance Adjustment : SDCM ≤ 3

Luminous Flux : 800 Lm / 1,600 Lm / 2,400 Lm / 3,200 Lm

Power Consumption : 7W / 14W / 21W / 28W

Note : Open L × W31 × H>38mm



L1 / L2 / L3 / L4  
REXLinac



**REX**LiTE®

Origin : Taiwan

Color : Champagne

Beam Angle : Linear Light, 120°

Dimension : L 295 × W33 × H15 mm

L 585 × W33 × H15 mm

L 885 × W33 × H15 mm

L1,185 × W33 × H15 mm

LED Source : NICHIA LED

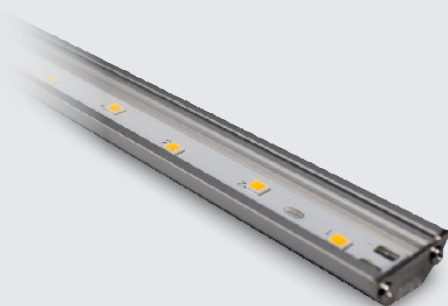
LED Specs : Ra ≥ 90 LM80 2,700K ~ 5,000K R9>50

Color Tolerance Adjustment : SDCM ≤ 3

Luminous Flux : 710 Lm / 1,420 Lm / 2,130 Lm / 2,840 Lm

Power Consumption : 7W / 14W / 21W / 28W

Note :



QL1 / QL2 / QL3 / QL4  
QubicLine



**REXLITE**®

Origin : Taiwan

Color : Frosted Aluminum

Beam Angle : Linear Light, 120°

Dimension : L 285 × W20 × H8 mm

L 585 × W20 × H8 mm

L 875 × W20 × H8 mm

L1,170 × W20 × H8 mm

LED Source : NICHIA LED

LED Specs : Ra ≥ 90 LM80 2,700K ~ 5,000K R9>50

Color Tolerance Adjustment : SDCM ≤ 3

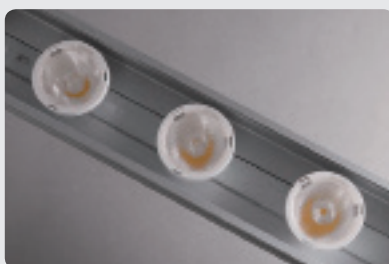
Luminous Flux : 350 Lm / 700 Lm / 1,050 Lm / 1,750 Lm

Power Consumption : 3.5W / 7W / 10.5W / 14W

Note :



RH1 / RH2 / RH3 / RH4  
IP68  
REXHiking



**REXLITE**®

Origin : Taiwan

Color : Aluminum

Beam Angle : Outdoor Spotlight, 25° / 40° / 80° / Wall wash

Dimension : L 295 x W60 x H85 mm

L 585 x W60 x H85 mm

L 885 x W60 x H85 mm

L 1,185 x W60 x H85 mm

LED Source : NICHIA LED

LED Specs : Ra ≥ 90 LM80 2,700K ~ 5,000K R9>50

Color Tolerance Adjustment : SDCM ≤ 3

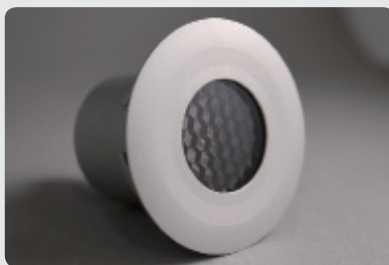
Luminous Flux : 585Lm / 1,170 Lm / 1,755Lm / 2,340 Lm

Power Consumption : 7W / 14W / 21W / 28W

Note :



MG2  
IP65  
REXMini



**REX**LITE®

Origin : Taiwan

Color : Black / Aluminum

Beam Angle : Spotlight, 25°

Dimension : Ø49 x H65 mm

LED Source : NICHIA LED

Color Tolerance Adjustment : SDCM ≤ 3

LED Specs : Ra ≥ 90 LM80 2,700K ~ 5,000K R9>50

Luminous Flux : 100 Lm

Power Consumption : 1.5W

Note : Open Ø45 x H 75 mm





QG2  
IP68  
QubicGuard



**REXLITE**<sup>®</sup>

Origin : Taiwan

Color : Stainless Steel

Beam Angle : Flood Ground Light

Dimension : Ø100 × H70 mm

LED Source : NICHIA LED

LED Specs : Ra ≥ 90 LM80 2,700K ~ 5,000K R9>50

Luminous Flux : 100 Lm

Power Consumption : 1.5W

Note : Open Ø90 x H75 mm



RS  
IP68  
REXStream



**REX**LITE®

Origin : Taiwan

Color : Transparent

Beam Angle : Soft Strip Light, 120°

Dimension : L x W 12 x H 6 mm

LED Source : NICHIA LED, Mono color

LED Specs : Ra  $\geq$  90 LM80 2,700K ~ 5,000K / Color R9 > 50

Color Tolerance Adjustment : SDCM  $\leq$  3

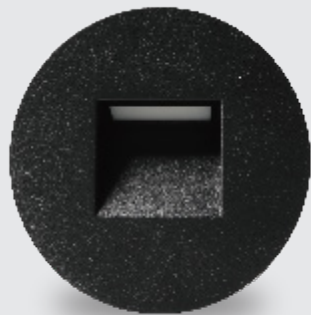
Luminous Flux : 450 Lm

Power Consumption : 5W / M

Note : Mono color

Soft Strip Light

Silicone Tube



QN4R  
QubicNox

**REXLITE**<sup>®</sup>

Origin : Taiwan

Color : Black

Beam Angle : Flood

Dimension :  $\varnothing 95 \times H33$  mm

LED Source : Osram , Seoul

LED Specs :  $R_a \geq 90$  ,  $R_9 > 50$  , 2700K / 3000K / 2200~3000K

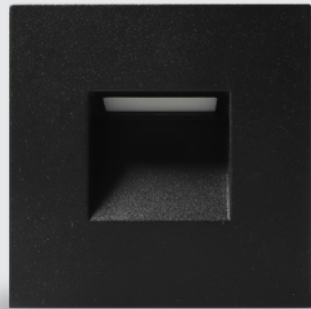
Color Tolerance Adjustment :  $SDCM \leq 3$

Luminous Flux : 62 / 65 / 70 Lm

Power Consumption : 9W

Note : Open  $W53 \times H60$  mm

# QubicNox Series



QN4S  
QubicNox

**REXLITE**<sup>®</sup>

Origin : Taiwan

Color : Black

Beam Angle : Flood

Dimension : 85 × 85 × H33 mm

LED Source : Osram , Seoul

LED Specs : Ra  $\geq$  90 , R9 > 50 , 2700K / 3000K / 2200~3000K

Color Tolerance Adjustment : SDCM  $\leq$  3

Luminous Flux : 62 / 65 / 70 Lm

Power Consumption : 4W

Note : Open W53 × H60 mm

# REXLiTE®

FISHBONE Design FISHBONE Design Co., Ltd.



REXLiTE®



CASAMBI

TCI LED

GLOBAL LED

ZUSU

techno

STEAB

No.108, Ln.187, Xihu Rd., Dali Dist.,  
Taichung City 41263, Taiwan (Headquarter)

No. 39, Wenxin S. Rd., Nantun Dist.,  
Taichung City 408, Taiwan (Showroom)

No.56, Ln. 69, Sec. 2, Jianguo S. Rd., Da' an Dist.,  
Taipei City 10658, Taiwan (Showroom)

+886-4-2496-4053

+886-4-2496-0497

[www.rexlite.com.tw](http://www.rexlite.com.tw)

REXLiTE

[rexlite.tw](https://www.instagram.com/rexlite.tw)