

REXLiTE[®]

2020
ISSUE



MTOF 06
IP 20
REXMobius

REXLITE[®]
瑞司照明系統

Origin : Taiwan

Color : Black / White

Beam Angle : 20° / 35° / 55°

Dimension (mm) : Ø50 x H67

Light Source : COB LED ARRAY

LED Specs : Ra \geq 90 R9 \geq 50

CCT : 2,700K / 3,000K / 3,500K / 4,000K

Color Tolerance Adjustment : SDCM \leq 3

Luminous Flux (lm) : 400 / 424 / 434 / 444

Power Consumption : 6.1W

Note :



MTOE 16
IP 20 / 40
REXMobius

REXLITE[®]
瑞司照明系統

Origin : Taiwan

Color : Black / White

Beam Angle : 20° / 35° / 50°

Dimension (mm) : Ø70 × H104

Light Source : COB LED ARRAY

LED Specs : Ra \geq 90 R9 \geq 50

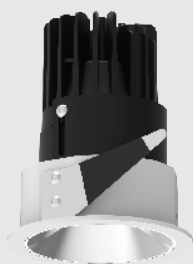
CCT : 2,700K / 3,000K / 3,500K / 4,000K

Color Tolerance Adjustment : SDCM \leq 3

Luminous Flux (lm) : 1,103 / 1,173 / 1,201 / 1,229

Power Consumption : 15.5W

Note :



MTOD 30
IP 20 / 40
REXMobius

REXLITE[®]
瑞司照明系統

Origin : Taiwan

Color : Black / White

Beam Angle : 17° / 30° / 45°

Dimension (mm) : Ø111 x H147

Light Source : COB LED ARRAY

LED Specs : Ra \geq 90 R9 \geq 50

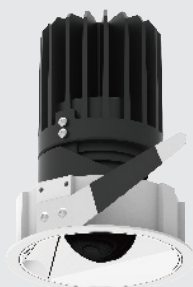
CCT : 2,700K / 3,000K / 3,500K / 4,000K

Color Tolerance Adjustment : SDCM \leq 3

Luminous Flux (lm) : 2,375 / 2,526 / 2,586 / 2,646

Power Consumption : 31.1W

Note :



MTOD 30 W
IP 20 / 40
REXMobius

REXLiTE[®]
瑞司照明系統

Origin : Taiwan

Color : Black / White

Beam Angle : WallWash

Dimension (mm) : $\varnothing 111 \times H 147$

Light Source : COB LED ARRAY

LED Specs : $R_a \geq 90$ $R_9 \geq 50$

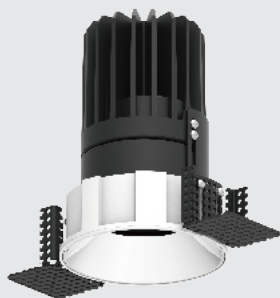
CCT : 2,700K / 3,000K / 3,500K / 4,000K

Color Tolerance Adjustment : $SDCM \leq 3$

Luminous Flux (lm) : 2,375 / 2,526 / 2,586 / 2,646

Power Consumption : 31.1W

Note :



MTOD 30 TR
IP 20 / 40
REXMobius

REXLITE[®]
瑞司照明系統

Origin : Taiwan

Color : Black / White

Beam Angle : 17° / 30° / 45°

Dimension (mm) : Ø174 x H145

Light Source : COB LED ARRAY

LED Specs : Ra \geq 90 R9 \geq 50

CCT : 2,700K / 3,000K / 3,500K / 4,000K

Color Tolerance Adjustment : SDCM \leq 3

Luminous Flux (lm) : 2,375 / 2,526 / 2,586 / 2,646

Power Consumption : 31.1W

Note :



MTOC 02 / 04 / 08
IP 20
REXMobius

REXLiTE[®]
瑞司照明系統

Origin : Taiwan

Color : Black / White

Beam Angle : 15° / 15° / 15°

Dimension (mm) : Ø33 × H60

Ø33 × H85

Ø33 × H111

Light Source : COB LED ARRAY

LED Specs : Ra ≥ 90 R9 ≥ 60

CCT : 2,700K / 3,000K / 4,000K / 5,000K

Color Tolerance Adjustment : SDCM ≤ 3

Luminous Flux (lm) : 228 / 246 / 246 / 264

543 / 543 / 586 / 586

594 / 639 / 684 / 738

Power Consumption : 2.3W / 7.1W / 10W

Note :



MTUB 10
IP 20 / 40
REXMobius

REXLiTE[®]
瑞司照明系統

Origin : Taiwan

Color : Black / White

Beam Angle : 30° / 40°

Dimension (mm) : Ø47 x H100

Light Source : COB LED ARRAY

LED Specs : Ra \geq 90 R9 \geq 60

CCT : 2,700K / 3,000K / 4,000K / 5,000K

Color Tolerance Adjustment : SDCM \leq 3

Luminous Flux (lm) : 543 / 543 / 586 / 586

Power Consumption : 7.2W

Note :



MTOB 06 TR
IP 20
REXMobius

REXLITE[®]
瑞司照明系統

Origin : Taiwan

Color : Black / White

Beam Angle : 30° / 40°

Dimension (mm) : Ø120 x H115.5

Light Source : COD LED ARRAY

LED Specs : Ra \geq 90 R9 \geq 60

CCT : 2,700K / 3,000K / 4,000K / 5,000K

Color Tolerance Adjustment : SDCM \leq 3

Luminous Flux (lm) : 497 / 532 / 574 / 616

Power Consumption : 6.3W

Note :



MTOA 20
IP 20 / 40
REXMobius

REXLITE[®]
瑞司照明系統

Origin : Taiwan

Color : Black / White

Beam Angle : 15° / 25° / 40°

Dimension (mm) : Ø108 x H105

Light Source : COB LED ARRAY

LED Specs : Ra \geq 90 R9 \geq 50 , 5,000K : Ra \geq 80 R9

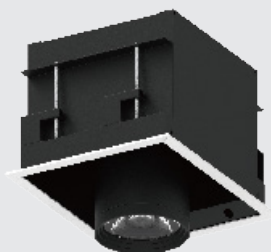
CCT : 2,700K / 3,000K / 3,500K / 4,000K / 5,000K

Color Tolerance Adjustment : SDCM \leq 3

Luminous Flux (lm) : 1,921 / 2,000 / 2,027 / 2,031 / 2,421

Power Consumption : 21.3W

Note :



MTBA 20
IP 20
REXMobius

REXLITE[®]
瑞司照明系統

Origin : Taiwan

Color : Black / White

Beam Angle : 15° / 25° / 40°

Dimension (mm) : W185 x D158 x H128

Light Source : COB LED ARRAY

LED Specs : Ra \geq 90 R9 \geq 50 , 5,000K : Ra \geq 80 R9

CCT : 2,700K / 3,000K / 3,500K / 4,000K / 5,000K

Color Tolerance Adjustment : SDCM \leq 3

Luminous Flux (lm) : 2,061 / 2,144 / 2,175 / 2,176 / 2,597

Power Consumption : 20W

Note :



MTBA 40
IP 20
REXMobius

REXLITE[®]
瑞司照明系統

Origin : Taiwan

Color : Black / White

Beam Angle : 15° / 25° / 40°

Dimension (mm) : W298 x D185 x H128

Light Source : COB LED ARRAY

LED Specs : Ra \geq 90 R9 \geq 50 , 5,000K : Ra \geq 80 R9

CCT : 2,700K / 3,000K / 3,500K / 4,000K / 5,000K

Color Tolerance Adjustment : SDCM \leq 3

Luminous Flux (lm) : 3,500 / 2,144 / 2,175 / 2,176 / 2597

Power Consumption : 20W

Note :



MTYA 85 MA
IP 20
REXMobius

REXLITE[®]
瑞司照明系統

Origin : Taiwan

Color : Black / White

Beam Angle : 30° / 40°

Dimension (mm) : Ø196 x H140

Light Source : COB LED ARRAY

LED Specs : Ra \geq 90 R9 \geq 50 , 5,000K : Ra \geq 80 R9

CCT : 2,700K / 3,000K / 3,500K / 4,000K / 5,000K

Color Tolerance Adjustment : SDCM \leq 3

Luminous Flux (lm) : 7,503 / 7,818 / 7,924 / 7,938 / 9,470

Power Consumption : 85W

Note :



MTYA 10
IP 20 / 44
REXMobius

REXLITE[®]
瑞司照明系統

Origin : Taiwan

Color : Black / White

Beam Angle : 40° / 60°

Dimension (mm) : Ø113 x H120

Light Source : COB LED ARRAY

LED Specs : Ra \geq 90 R9 \geq 50 , 5,000K : Ra \geq 80 R9

CCT : 2,700K / 3,000K / 3,500K / 4,000K / 5,000K

Color Tolerance Adjustment : SDCM \leq 3

Luminous Flux (lm) : 1,020 / 1,062 / 1,076 / 1,078 / 1,285

Power Consumption : 10W

Note :



MTYA 20
IP 20 / 44
REXMobius

REXLITE[®]
瑞司照明系統

Origin : Taiwan

Color : Black / White

Beam Angle : 40° / 60°

Dimension (mm) : Ø160 x H135

Light Source : COB LED ARRAY

LED Specs : Ra \geq 90 R9 \geq 50 , 5,000K : Ra \geq 80 R9

CCT : 2,700K / 3,000K / 3,500K / 4,000K / 5,000K

Color Tolerance Adjustment : SDCM \leq 3

Luminous Flux (lm) : 2,062 / 2,144 / 2,175 / 2,176 / 2,597

Power Consumption : 20.5W

Note :



MTYA 35
IP 20 / 44
REXMobius

REXLITE[®]
瑞司照明系統

Origin : Taiwan

Color : Black / White

Beam Angle : 40° / 60°

Dimension (mm) : Ø196 x H133.5

Light Source : COB LED ARRAY

LED Specs : Ra \geq 90 R9 \geq 50 , 5,000K : Ra \geq 80 R9

CCT : 2,700K / 3,000K / 3,500K / 4,000K / 5,000K

Color Tolerance Adjustment : SDCM \leq 3

Luminous Flux (lm) : 3,148 / 3,272 / 3,321 / 3,322 / 3,965

Power Consumption : 35W

Note :



MTOB 02
IP 20
REXMobius

REXLiTE[®]
瑞司照明系統

Origin : Taiwan

Color : Black / White

Beam Angle : 30° / 40°

Dimension (mm) : Ø33 x H60

Light Source : COB LED ARRAY

LED Specs : Ra \geq 90 R9 \geq 60

CCT : 2,700K / 3,000K / 4,000K / 5,000K

Color Tolerance Adjustment : SDCM \leq 3

Luminous Flux (lm) : 213 / 228 / 246 / 264

Power Consumption : 2.5W

Note :



MTOB 02 W
IP 20
REXMobius

REXLiTE[®]
瑞司照明系統

Origin : Taiwan

Color : Black / White

Beam Angle : WallWash

Dimension (mm) : Ø33 x H66

Light Source : COB LED ARRAY

LED Specs : Ra \geq 90 R9 \geq 60

CCT : 2,700K / 3,000K / 4,000K / 5,000K

Color Tolerance Adjustment : SDCM \leq 3

Luminous Flux (lm) : 213 / 228 / 246 / 264

Power Consumption : 2.5W

Note :



MTOB 06
IP 20
REXMobius

REXLiTE[®]
瑞司照明系統

Origin : Taiwan

Color : Black / White

Beam Angle : 30° / 40°

Dimension (mm) : Ø33 x H85

Light Source : COB LED ARRAY

LED Specs : Ra \geq 90 R9 \geq 60

CCT : 2,700K / 3,000K / 4,000K / 5,000K

Color Tolerance Adjustment : SDCM \leq 3

Luminous Flux (lm) : 497 / 532 / 574 / 616

Power Consumption : 6.3W

Note :



MTOB 06 W
IP 20
REXMobius

REXLITE[®]
瑞司照明系統

Origin : Taiwan

Color : Black / White

Beam Angle : WallWash

Dimension (mm) : Ø33 x H91

Light Source : COB LED ARRAY

LED Specs : Ra \geq 90 R9 \geq 60

CCT : 2,700K / 3,000K / 4,000K / 5,000K

Color Tolerance Adjustment : SDCM \leq 3

Luminous Flux (lm) : 645 / 690 / 743 / 744

Power Consumption : 6W

Note :



MTOB 06 T
IP 20
REXMobius

REXLiTE[®]
瑞司照明系統

Origin : Taiwan

Color : Black / White

Beam Angle : 15° / 24° / 38°

Dimension (mm) : Ø33 x H95

Light Source : COB LED ARRAY

LED Specs : Ra \geq 90 R9 \geq 60

CCT : 2,700K / 3,000K / 4,000K / 5,000K

Color Tolerance Adjustment : SDCM \leq 3

Luminous Flux (lm) : 543 / 543 / 586 / 586

Power Consumption : 7.2W

Note :



MTOB 08
IP 20
REXMobius

REXLITE[®]
瑞司照明系統

Origin : Taiwan

Color : Black / White

Beam Angle : 30° / 40°

Dimension (mm) : Ø33 x H111

Light Source : COB LED ARRAY

LED Specs : Ra \geq 90 R9 \geq 60

CCT : 2,700K / 3,000K / 4,000K / 5,000K

Color Tolerance Adjustment : SDCM \leq 3

Luminous Flux (lm) : 533 / 570 / 615 / 660

Power Consumption : 7.8W

Note :



MTOB 08 W
IP 20
REXMobius

REXLiTE[®]
瑞司照明系統

Origin : Taiwan

Color : Black / White

Beam Angle : Wallwash

Dimension (mm) : Ø33 x H117

Light Source : COB LED ARRAY

LED Specs : Ra \geq 90 R9 \geq 60

CCT : 2,700K / 3,000K / 4,000K / 5,000K

Color Tolerance Adjustment : SDCM \leq 3

Luminous Flux (lm) : 533 / 570 / 615 / 660

Power Consumption : 7.8W

Note :



MTAA 20 PL
IP 20 / 40
REXMobius

REXLiTE[®]
瑞司照明系統

Origin : Taiwan

Color : Black / White

Beam Angle : 15° / 25° / 40°

Dimension (mm) : Ø99.5 × H118

Light Source : COB LED ARRAY

LED Specs : Ra ≥ 90 R9 ≥ 50 • 5,000K : Ra ≥ 80 R9

CCT : 2,700K / 3,000K / 3,500K / 4,000K / 5,000K

Color Tolerance Adjustment : SDCM ≤ 3

Luminous Flux (lm) : 1,921 / 2,000 / 2,027 / 2,031 / 2,421

Power Consumption : 21.3W

Note :



MTAA 20 AJPL
IP 20 / 40
REXMobius

REXLITE[®]
瑞司照明系統

Origin : Taiwan

Color : Black / White

Beam Angle : 15° / 25° / 40°

Dimension (mm) : Ø99.5 × H127

Light Source : COB LED ARRAY

LED Specs : Ra \geq 90 R9 \geq 50 • 5,000K : Ra \geq 80 R9

CCT : 2,700K / 3,000K / 3,500K / 4,000K / 5,000K

Color Tolerance Adjustment : SDCM \leq 3

Luminous Flux (lm) : 1,921 / 2,000 / 2,027 / 2,031 / 2,421

Power Consumption : 21.3W

Note :



MTA 20 TR
IP 20 / 40
REXMobius

REXLITE[®]
瑞司照明系統

Origin : Taiwan

Color : Black / White

Beam Angle : 15° / 25° / 40°

Dimension (mm) : Ø155 x H118

Light Source : COB LED ARRAY

LED Specs : Ra \geq 90 R9 \geq 50 , 5,000K : Ra \geq 80 R9

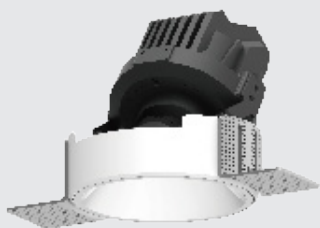
CCT : 2,700K / 3,000K / 3,500K / 4,000K / 5,000K

Color Tolerance Adjustment : SDCM \leq 3

Luminous Flux (lm) : 1,921 / 2,000 / 2,027 / 2,031 / 2,421

Power Consumption : 21.3W

Note :



MTAA 20 AJTR
IP 20 / 40
REXMobius

REXLiTE[®]
瑞司照明系統

Origin : Taiwan

Color : Black / White

Beam Angle : 15° / 25° / 40°

Dimension (mm) : Ø89.5 × H127

Light Source : COB LED ARRAY

LED Specs : Ra \geq 90 R9 \geq 50 , 5,000K : Ra \geq 80 R9

CCT : 2,700K / 3,000K / 3,500K / 4,000K / 5,000K

Color Tolerance Adjustment : SDCM \leq 3

Luminous Flux (lm) : 1,921 / 2,000 / 2,027 / 2,031 / 2,421

Power Consumption : 21.3W

Note :



MTAA 20
IP 20
REXMobius

REXLiTE[®]
瑞司照明系統

Origin : Taiwan

Color : Black / White

Beam Angle : 15° / 25° / 40°

Dimension (mm) : Ø94 × H118

Light Source : COB LED ARRAY

LED Specs : Ra ≥ 90 R9 ≥ 50 , 5,000K : Ra ≥ 80 R9

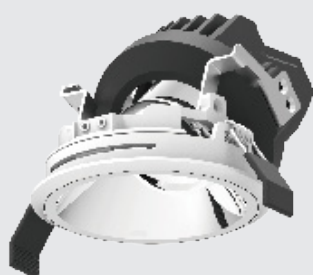
CCT : 2,700K / 3,000K / 3,500K / 4,000K / 5,000K

Color Tolerance Adjustment : SDCM ≤ 3

Luminous Flux (lm) : 1,921 / 2,000 / 2,027 / 2,031 / 2,421

Power Consumption : 21.3W

Note :



MTA 20 AJ
IP 20
REXMobius

REXLiTE[®]
瑞司照明系統

Origin : Taiwan

Color : Black / White

Beam Angle : 15° / 25° / 40°

Dimension (mm) : Ø94 × H127

Light Source : COB LED ARRAY

LED Specs : Ra ≥ 90 R9 ≥ 50 • 5,000K : Ra ≥ 80 R9

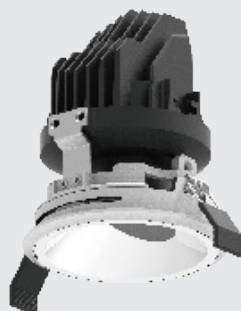
CCT : 2,700K / 3,000K / 3,500K / 4,000K / 5,000K

Color Tolerance Adjustment : SDCM ≤ 3

Luminous Flux (lm) : 1,921 / 2,000 / 2,027 / 2,031 / 2,421

Power Consumption : 21.3W

Note :



MTAA 20 W
IP 20
REXMobius

REXLiTE[®]
瑞司照明系統

Origin : Taiwan

Color : Black / White

Beam Angle : WallWash

Dimension (mm) : Ø94 x H118

Light Source : COB LED ARRAY

LED Specs : Ra \geq 90 R9 \geq 50 , 5,000K : Ra \geq 80 R9

CCT : 2,700K / 3,000K / 3,500K / 4,000K / 5,000K

Color Tolerance Adjustment : SDCM \leq 3

Luminous Flux (lm) : 1,921 / 2,000 / 2,027 / 2,031 / 2,421

Power Consumption : 21.3W

Note :



MTAA 20 WS
IP 20
REXMobius

REXLiTE[®]
瑞司照明系統

Origin : Taiwan

Color : Black / White

Beam Angle : WallWash

Dimension (mm) : $\varnothing 108 \times H86$

Light Source : COB LED ARRAY

LED Specs : $R_a \geq 90$ $R_9 \geq 50$, 5,000K : $R_a \geq 80$ R_9

CCT : 2,700K / 3,000K / 3,500K / 4,000K / 5,000K

Color Tolerance Adjustment : $SDCM \leq 3$

Luminous Flux (lm) : 1,921 / 2,000 / 2,027 / 2,031 / 2,421

Power Consumption : 21.3W

Note :



MTA30
IP20
REXMobius

REXLITE[®]
瑞司照明系統

Origin : Taiwan

Color : Black / White

Beam Angle : 15° / 25° / 40°

Dimension (mm) : Ø136 x H120

Light Source : COB LED ARRAY

LED Specs : Ra \geq 90 R9 \geq 50 , 5,000K : Ra \geq 80 R9

CCT : 2,700K / 3,000K / 3,500K / 4,000K / 5,000K

Color Tolerance Adjustment : SDCM \leq 3

Luminous Flux (lm) : 2,797 / 2,907 / 2,950 / 2,952 / 3,523

Power Consumption : 28.4W

Note :



MTAB 30 AJ
IP 20
REXMobius

REXLiTE[®]
瑞司照明系統

Origin : Taiwan

Color : Black / White

Beam Angle : 15° / 25° / 40°

Dimension (mm) : Ø136 x H129

Light Source : COB LED ARRAY

LED Specs : Ra \geq 90 R9 \geq 50 • 5,000K : Ra \geq 80 R9

CCT : 2,700K / 3,000K / 3,500K / 4,000K / 5,000K

Color Tolerance Adjustment : SDCM \leq 3

Luminous Flux (lm) : 2,797 / 2,907 / 2,950 / 2,952 / 3523

Power Consumption : 28.4W

Note :



MTAB 30 W
IP 20
REXMobius

REXLITE[®]
瑞司照明系統

Origin : Taiwan

Color : Black / White

Beam Angle : WallWash

Dimension (mm) : $\varnothing 136 \times H 120$

Light Source : COB LED ARRAY

LED Specs : $R_a \geq 90$ $R_9 \geq 50$, 5,000K : $R_a \geq 80$ R_9

CCT : 2,700K / 3,000K / 3,500K / 4,000K / 5,000K

Color Tolerance Adjustment : $SDCM \leq 3$

Luminous Flux (lm) : 2,797 / 2,907 / 2,950 / 2,952 / 3523

Power Consumption : 28.4W

Note :



MTAC 17
IP 20 / 40
REXMobius

REXLiTE[®]
瑞司照明系統

Origin : Taiwan

Color : Black / White

Beam Angle : 15° / 25° / 40° / 60°

Dimension (mm) : Ø96 x H58

Light Source : COB LED ARRAY

LED Specs : Ra ≥ 90 R9 ≥ 50 , 5,000K : Ra ≥ 80 R9

CCT : 2,700K / 3,000K / 3,500K / 4,000K / 5,000K

Color Tolerance Adjustment : SDCM ≤ 3

Luminous Flux (lm) : 1,573 / 1,637 / 1,660 / 1,663 / 1,983

Power Consumption : 16.7W

Note :



MTAC 17T
IP 20 / 40
REXMobius

REXLiTE[®]
瑞司照明系統

Origin : Taiwan

Color : Black / White

Beam Angle : 15° / 25° / 40° / 60°

Dimension (mm) : Ø104 x H59.5

Light Source : COB LED ARRAY

LED Specs : Ra ≥ 90 R9 ≥ 50 , 5,000K : Ra ≥ 80 R9

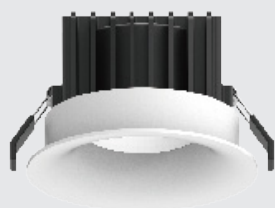
CCT : 2,700K / 3,000K / 3,500K / 4,000K / 5,000K

Color Tolerance Adjustment : SDCM ≤ 3

Luminous Flux (lm) : 1,573 / 1,637 / 1,660 / 1,663 / 1,983

Power Consumption : 16.7W

Note :



MTAD 35
IP 20
REXMobius

REXLITE[®]
瑞司照明系統

Origin : Taiwan

Color : Black / White

Beam Angle : 15° / 30° / 60°

Dimension (mm) : Ø116 × H82

Light Source : COB LED ARRAY

LED Specs : Ra ≥ 90 R9 ≥ 50 , 5,000K : Ra ≥ 80 R9

CCT : 2,700K / 3,000K / 3,500K / 4,000K / 5,000K

Color Tolerance Adjustment : SDCM ≤ 3

Luminous Flux (lm) : 3,148 / 3,272 / 3,321 / 3,322 / 3,965

Power Consumption : 34.4W

Note :



MTAD 35V2
IP 20 / 40
REXMobius

REXLiTE[®]
瑞司照明系統

Origin : Taiwan

Color : Black / White

Beam Angle : 15° / 30° / 60°

Dimension (mm) : Ø112 x H86.5

Light Source : COB LED ARRAY

LED Specs : Ra \geq 90 R9 \geq 50 , 5,000K : Ra \geq 80 R9

CCT : 2,700K / 3,000K / 3,500K / 4,000K / 5,000K

Color Tolerance Adjustment : SDCM \leq 3

Luminous Flux (lm) : 3,148 / 3,272 / 3,321 / 3,322 / 3,965

Power Consumption : 34.4W

Note :



MTZA 12
IP 20
REXMobius

REXLiTE[®]
瑞司照明系統

Origin : Taiwan

Color : Black / White

Beam Angle : 15° / 25° / 40° / 60°

Dimension (mm) : Ø76 x H71.5

Light Source : COB LED ARRAY

LED Specs : Ra ≥ 90 R9 ≥ 50 , 5,000K : Ra ≥ 80 R9

CCT : 2,700K / 3,000K / 3,500K / 4,000K / 5,000K

Color Tolerance Adjustment : SDCM ≤ 3

Luminous Flux (lm) : 1,209 / 1,258 / 1,275 / 1,278 / 1,523

Power Consumption : 12.2W

Note :



MTZA 12 T
IP 20
REXMobius

REXLiTE[®]
瑞司照明系統

Origin : Taiwan

Color : Black / White

Beam Angle : 15° / 25° / 40° / 60°

Dimension (mm) : Ø92 x H75

Light Source : COB LED ARRAY

LED Specs : Ra \geq 90 R9 \geq 50 , 5,000K : Ra \geq 80 R9

CCT : 2,700K / 3,000K / 3,500K / 4,000K / 5,000K

Color Tolerance Adjustment : SDCM \leq 3

Luminous Flux (lm) : 1,209 / 1,258 / 1,275 / 1,278 / 1,523

Power Consumption : 12.2W

Note :



MTOG 12
IP 20
REXMobius

REXLiTE[®]
瑞司照明系統

Origin : Taiwan

Color : Black / White

Beam Angle : 15° / 25° / 40° / 60°

Dimension (mm) : Ø103 x H100

Light Source : COB LED ARRAY

LED Specs : Ra \geq 90 R9 \geq 50 , 5,000K : Ra \geq 80 R9

CCT : 2,700K / 3,000K / 3,500K / 4,000K / 5,000K

Color Tolerance Adjustment : SDCM \leq 3

Luminous Flux (lm) : 1,209 / 1,258 / 1,275 / 1,278 / 1,523

Power Consumption : 12.2W

Note :



MTOG 122
IP 20
REXMobius

REXLITE[®]
瑞司照明系統

Origin : Taiwan

Color : Black / White

Beam Angle : 15° / 25° / 40° / 60°

Dimension (mm) : Ø103 x H100

Light Source : COB LED ARRAY

LED Specs : Ra ≥ 90 R9 ≥ 50 , 5,000K : Ra ≥ 80 R9

CCT : 2,700K / 3,000K / 3,500K / 4,000K / 5,000K

Color Tolerance Adjustment : SDCM ≤ 3

Luminous Flux (lm) : 1,209 / 1,251 / 1,275 / 1,278 / 1,523

Power Consumption : 12.2W

Note :



MTOG 123
IP 20
REXMobius

REXLITE[®]
瑞司照明系統

Origin : Taiwan

Color : Black / White

Beam Angle : 15° / 25° / 40° / 60°

Dimension (mm) : Ø103 x H100

Light Source : COB LED ARRAY

LED Specs : Ra \geq 90 R9 \geq 50 , 5,000K : Ra \geq 80 R9

CCT : 2,700K / 3,000K / 3,500K / 4,000K / 5,000K

Color Tolerance Adjustment : SDCM \leq 3

Luminous Flux (lm) : 1,209 / 1,258 / 1,275 / 1,278 / 1,523

Power Consumption : 12.2W

Note :



MTAE 20 Z
IP 20
REXMobius

REXLITE[®]
瑞司照明系統

Origin : Taiwan

Color : Black / White

Beam Angle : 15° - 60°

Dimension (mm) : Ø62 x W70 x H233

Light Source : COB LED ARRAY

LED Specs : Ra ≥ 90 R9 ≥ 50

CCT : 2,700K / 3,000K / 3,500K / 4,000K

Color Tolerance Adjustment : SDCM ≤ 3

Luminous Flux (lm) : 1,367 / 1,453 / 1,488 / 1,522

Power Consumption : 19.8W

Note :



MTEA 30
IP 20
REXMobius

REXLITE[®]
瑞司照明系統

Origin : Taiwan

Color : Black / White

Beam Angle : 15° / 25° / 40°

Dimension (mm) : Ø80 x W70 x H220

Light Source : COB LED ARRAY

LED Specs : Ra \geq 90 R9 \geq 50 , 5,000K : Ra \geq 80 R9

CCT : 2,700K / 3,000K / 3,500K / 4,000K / 5,000K

Color Tolerance Adjustment : SDCM \leq 3

Luminous Flux (lm) : 3,000 / 3,119 / 3,164 / 3,166 / 3,778

Power Consumption : 31W

Note :



MTEA 40 D
IP 20
REXMobius

REXLiTE[®]
瑞司照明系統

Origin : Taiwan

Color : Black / White

Beam Angle : 15° / 25° / 40°

Dimension (mm) : Ø64 x W150 x H220

Light Source : COB LED ARRAY

LED Specs : Ra \geq 90 R9 \geq 50 , 5,000K : Ra \geq 80 R9

CCT : 2,700K / 3,000K / 3,500K / 4,000K / 5,000K

Color Tolerance Adjustment : SDCM \leq 3

Luminous Flux (lm) : 4,054 / 4,216 / 4,277 / 4,280 / 5,107

Power Consumption : 45W

Note :



MTEA 25 H
IP 20
REXMobius

REXLiTE[®]
瑞司照明系統

Origin : Taiwan

Color : Black / White

Beam Angle : 15° / 25° / 40°

Dimension (mm) : Ø80 x W228 x H225

Light Source : COB LED ARRAY

LED Specs : Ra \geq 90 R9 \geq 50 , 5,000K : Ra \geq 80 R9

CCT : 2,700K / 3,000K / 3,500K / 4,000K / 5,000K

Color Tolerance Adjustment : SDCM \leq 3

Luminous Flux (lm) : 2,816 / 2,928 / 2,971 / 2,973 / 3,547

Power Consumption : 28.8W

Note :



MTEA 35 H
IP 20
REXMobius

REXLiTE[®]
瑞司照明系統

Origin : Taiwan

Color : Black / White

Beam Angle : 15° / 25° / 40°

Dimension (mm) : Ø80 x W228 x H225

Light Source : COB LED ARRAY

LED Specs : Ra \geq 90 R9 \geq 50 , 5,000K : Ra \geq 80 R9

CCT : 2,700K / 3,000K / 3,500K / 4,000K / 5,000K

Color Tolerance Adjustment : SDCM \leq 3

Luminous Flux (lm) : 3,359 / 3,493 / 3,544 / 3,546 / 4,231

Power Consumption : 35.6W

Note :



MTUA 10
IP 20
REXMobius

REXLiTE[®]
瑞司照明系統

Origin : Taiwan

Color : Black / White

Beam Angle : 15° / 24° / 36°

Dimension (mm) : Ø36 x W166 x H118.5

Light Source : COB LED ARRAY

LED Specs : Ra \geq 90 R9 \geq 50

CCT : 2,700K / 3,000K / 3,500K / 4,000K

Color Tolerance Adjustment : SDCM \leq 3

Luminous Flux (lm) : 822 / 874 / 894 / 915

Power Consumption : 10.7W

Note :



MTU 10 H
IP 20
REXMobius

REXLiTE[®]
瑞司照明系統

Origin : Taiwan

Color : Black / White

Beam Angle : 15° / 24° / 36°

Dimension (mm) : Ø36 x W162 x H143

Light Source : COB LED ARRAY

LED Specs : Ra \geq 90 R9 \geq 50

CCT : 2,700K / 3,000K / 3,500K / 4,000K

Color Tolerance Adjustment : SDCM \leq 3

Luminous Flux (lm) : 822 / 874 / 894 / 915

Power Consumption : 10.7W

Note :



MTRB 5
IP 20
REXMobius

REXLiTE[®]
瑞司照明系統

Origin : Taiwan

Color : Black / White

Beam Angle : 15° / 25° / 40°

Dimension (mm) : Ø52 x W70 x H120

Light Source : COB LED ARRAY

LED Specs : Ra \geq 90 R9 \geq 50

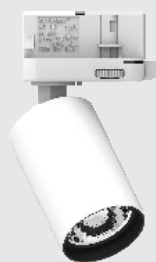
CCT : 2,700K / 3,000K / 4,000K / 5,000K

Color Tolerance Adjustment : SDCM \leq 3

Luminous Flux (lm) : 480 / 495 / 510 / 510

Power Consumption : 5W

Note :



MTRB 7
IP 20
REXMobius

REXLiTE[®]
瑞司照明系統

Origin : Taiwan

Color : Black / White

Beam Angle : 15° / 25° / 40°

Dimension (mm) : Ø52 x W70 x H120

Light Source : COB LED ARRAY

LED Specs : Ra \geq 90 R9 \geq 50

CCT : 2,700K / 3,000K / 4,000K / 5,000K

Color Tolerance Adjustment : SDCM \leq 3

Luminous Flux (lm) : 625 / 635 / 660 / 660

Power Consumption : 7W

Note :



MTRB 10
IP 20
REXMobius

REXLITE[®]
瑞司照明系統

Origin : Taiwan

Color : Black / White

Beam Angle : 15° / 25° / 40°

Dimension (mm) : Ø52 x W70 x H120

Light Source : COB LED ARRAY

LED Specs : Ra \geq 90 R9 \geq 50

CCT : 2,700K / 3,000K / 4,000K / 5,000K

Color Tolerance Adjustment : SDCM \leq 3

Luminous Flux (lm) : 955 / 980 / 1,015 / 1,015

Power Consumption : 10W

Note :



MTRA 15 / MTRA 15 PLUS
IP 20
REXMobius

REXLiTE[®]
瑞司照明系統

Origin : Taiwan

Color : Black / White

Beam Angle : 15° / 25° / 40° / 60°

Dimension (mm) : Ø52 × W70 × H195

Ø52 × W70 × H202

Light Source : COB LED ARRAY

LED Specs : Ra ≥ 90 R9 ≥ 50 , 5,000K : Ra ≥ 80 R9

CCT : 2,700K / 3,000K / 3,500K / 4,000K / 5,000K

Color Tolerance Adjustment : SDCM ≤ 3

Luminous Flux (lm) : 1,407 / 1,470 / 1,508 / 1,514 / 1,860

Power Consumption : 14.9W

Note :



MTRA 15 H / MTRA 15 H PLUS
IP 20
REXMobius

REXLITE[®]
瑞司照明系統

Origin : Taiwan

Color : Black / White

Beam Angle : 15° / 25° / 40° / 60°

Dimension (mm) : Ø52 x W162 x H138

Ø52 x W162 x H145

Light Source : COB LED ARRAY

LED Specs : Ra ≥ 90 R9 ≥ 50 , 5,000K : Ra ≥ 80 R9

CCT : 2,700K / 3,000K / 3,500K / 4,000K / 5,000K

Color Tolerance Adjustment : SDCM ≤ 3

Luminous Flux (lm) : 1,393 / 1,450 / 1,470 / 1,473 / 1,756

Power Consumption : 14.4W

Note :



MTRA 25 H / MTRA 25 H PLUS
IP 20
REXMobius

REXLiTE[®]
瑞司照明系統

Origin : Taiwan

Color : Black / White

Beam Angle : 15° / 25° / 40° / 60°

Dimension (mm) : Ø52 × W162 × H198

Ø52 × W162 × H205

Light Source : COB LED ARRAY

LED Specs : Ra ≥ 90 R9 ≥ 50 , 5,000K : Ra ≥ 80 R9

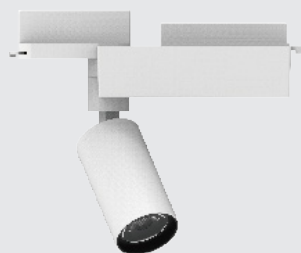
CCT : 2,700K / 3,000K / 3,500K / 4,000K / 5,000K

Color Tolerance Adjustment : SDCM ≤ 3

Luminous Flux (lm) : 2,254 / 2,346 / 2,378 / 2,383 / 2,840

Power Consumption : 26.1W

Note :



MTRA 15 D / MTRA 15 D PLUS
IP 20
REXMobius

REXLiTE[®]
瑞司照明系統

Origin : Taiwan

Color : Black / White

Beam Angle : 15° / 25° / 40° / 60°

Dimension (mm) : Ø52 × W150 × H135

Ø52 × W150 × H142

Light Source : COB LED ARRAY

LED Specs : Ra ≥ 90 R9 ≥ 50 , 5,000K : Ra ≥ 80 R9

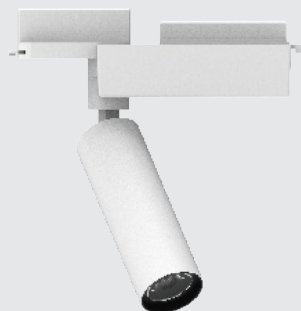
CCT : 2,700K / 3,000K / 3,500K / 4,000K / 5,000K

Color Tolerance Adjustment : SDCM ≤ 3

Luminous Flux (lm) : 1,393 / 1,450 / 1,470 / 1,473 / 1,756

Power Consumption : 14.4W

Note :



MTRA 25W D / MTRA 25W D PLUS
IP 20
REXMobius

REXLiTE[®]
瑞司照明系統

Origin : Taiwan

Color : Black / White

Beam Angle : 15° / 25° / 40° / 60°v

Dimension (mm) : Ø52 × W150 × H195

Ø52 × W150 × H202

Light Source : COB LED ARRAY

LED Specs : Ra ≥ 90 R9 ≥ 50 , 5,000K : Ra ≥ 80 R9

CCT : 2,700K / 3,000K / 3,500K / 4,000K / 5,000K

Color Tolerance Adjustment : SDCM ≤ 3

Luminous Flux(lm) : 2,254 / 2,346 / 2,378 / 2,383 / 2,840

Power Consumption : 26.1W

Note :



MTAF 14
IP 20
REXMobius

REXLiTE[®]
瑞司照明系統

Origin : Taiwan

Color : Black / White

Beam Angle : 15° / 25° / 40°

Dimension (mm) : Ø62 x W70 x H125

Light Source : COB LED AEEAY

LED Specs : Ra \geq 90 R9 \geq 50

CCT : 2,700K / 3,000K / 4,000K / 5,000K

Color Tolerance Adjustment : SDCM \leq 3

Luminous Flux (lm) : 1,245 / 1,280 / 1,330 / 1,330

Power Consumption : 14W

Note :



MTAE 20 / MTAE 20 PLUS
IP 20
REXMobius

REXLiTE[®]
瑞司照明系統

Origin : Taiwan

Color : Black / White

Beam Angle : 15° / 25° / 40°

Dimension (mm) : Ø62 × W70 × H200

Ø62 × W70 × H207

Light Source : COB LED ARRAY

LED Specs : Ra ≥ 90 R9 ≥ 50 , 5,000K : Ra ≥ 80 R9

CCT : 2,700K / 3,000K / 3,500K / 4,000K / 5,000K

Color Tolerance Adjustment : SDCM ≤ 3

Luminous Flux (lm) : 1,921 / 2,000 / 2,027 / 2,031 / 2,421

Power Consumption : 23.3W

Note :



MTAE 17 H / MTAE 17 H PLUS
IP 20
REXMobius

REXLiTE[®]
瑞司照明系統

Origin : Taiwan

Color : Black / White

Beam Angle : 15° / 25° / 40° / 60°

Dimension (mm) : Ø62 x W162 x H133

Ø62 x W162 x H140

Light Source : COB LED ARRAY

LED Specs : Ra ≥ 90 R9 ≥ 50 , 5,000K : Ra ≥ 80 R9

CCT : 2,700K / 3,000K / 3,500K / 4,000K / 5,000K

Color Tolerance Adjustment : SDCM ≤ 3

Luminous Flux (lm) : 1,749 / 1,821 / 1,846 / 1,849 / 2,204

Power Consumption : 19W

Note :



MTAE 25H / MTAE 25 H PLUS
IP 20
REXMobius

REXLiTE[®]
瑞司照明系統

Origin : Taiwan

Color : Black / White

Beam Angle : 15° / 25° / 40° / 60°

Dimension (mm) : Ø62 x W162 x H163

Ø62 x W162 x H170

Light Source : COB LED ARRAY

LED Specs : Ra ≥ 90 R9 ≥ 50 , 5,000K : Ra ≥ 80 R9

CCT : 2,700K / 3,000K / 3,500K / 4,000K / 5,000K

Color Tolerance Adjustment : SDCM ≤ 3

Luminous Flux (lm) : 2,572 / 2,678 / 2,714 / 2,720 / 3,242

Power Consumption : 31.1W

Note :



MTAE 32 H / MTAE 32 H PLUS
IP 20
REXMobius

REXLiTE[®]
瑞司照明系統

Origin : Taiwan

Color : Black / White

Beam Angle : 15° / 25° / 40°

Dimension (mm) : Ø62 × W228 × H203

Ø62 × W228 × H210

Light Source : COB LED ARRAY

LED Specs : Ra ≥ 90 R9 ≥ 50 , 5,000K : Ra ≥ 80 R9

CCT : 2,700K / 3,000K / 3,500K / 4,000K / 5,000K

Color Tolerance Adjustment : SDCM ≤ 3

Luminous Flux (lm) : 2,879 / 2,996 / 3,037 / 3,043 / 3,628

Power Consumption : 34.4W

Note :



MTAE 17 D / MTAE 17 D PLUS
IP 20
REXMobius

REXLiTE[®]
瑞司照明系統

Origin : Taiwan

Color : Black / White

Beam Angle : 15° / 25° / 40° / 60°

Dimension (mm) : Ø62 × W150 × H130

Ø62 × W150 × H137

Light Source : COB LED ARRAY

LED Specs : Ra ≥ 90 R9 ≥ 50 , 5,000K : Ra ≥ 80 R9

CCT : 2,700K / 3,000K / 3,500K / 4,000K / 5,000K

Color Tolerance Adjustment : SDCM ≤ 3

Luminous Flux (lm) : 1,749 / 1,821 / 1,846 / 1,849 / 2,204

Power Consumption : 19W

Note :



MTAE 25 D / MTAE 25 D PLUS
IP 20
REXMobius

REXLITE[®]
瑞司照明系統

Origin : Taiwan

Color : Black / White

Beam Angle : 15° / 25° / 40° / 60°

Dimension (mm) : Ø62 x W150 x H160

Ø62 x W150 x H167

Light Source : COB LED ARRAY

LED Specs : Ra ≥ 90 R9 ≥ 50 , 5,000K : Ra ≥ 80 R9

CCT : 2,700K / 3,000K / 3,500K / 4,000K / 5,000K

Color Tolerance Adjustment : SDCM ≤ 3

Luminous Flux (lm) : 2,572 / 2,678 / 2,714 / 2,720 / 3,242

Power Consumption : 34.4W

Note :



MTAE 32 D / MTEA 32 D PLUS
IP 20
REXMobius

REXLiTE[®]
瑞司照明系統

Origin : Taiwan

Color : Black / White

Beam Angle : 15° / 25° / 40°

Dimension (mm) : Ø62 x W150 x H190

Ø62 x W150 x H197

Light Source : COB LED ARRAY

LED Specs : Ra ≥ 90 R9 ≥ 50 , 5,000K : Ra ≥ 80 R9

CCT : 2,700K / 3,000K / 3,500K / 4,000K / 5,000K

Color Tolerance Adjustment : SDCM ≤ 3

Luminous Flux (lm): 2,879 / 2,996 / 3,037 / 3,043 / 3,628

Power Consumption : 34.4

Note :



MTRC 25
IP 20
REXMobius

REXLiTE[®]
瑞司照明系統

Origin : Taiwan

Color : Black / White

Beam Angle : 15° / 30° / 60°

Dimension (mm) : Ø86 x H153

Light Source : COB LED ARRAY

LED Specs : Ra \geq 90 R9 \geq 50 , 5,000K : Ra \geq 80 R9

CCT : 2,700K / 3,000K / 3,500K / 4,000K / 5,000K

Color Tolerance Adjustment : SDCM \leq 3

Luminous Flux (lm) : 2,797 / 2,907 / 2,950 / 2,952 / 3,523

Power Consumption : 29.6W

Note :



MTRC 30
IP 20
REXMobius

REXLiTE[®]
瑞司照明系統

Origin : Taiwan

Color : Black / White

Beam Angle : 15° / 30° / 60°

Dimension (mm) : Ø86 x H153

Light Source : COB LED ARRAY

LED Specs : Ra \geq 90 R9 \geq 50 , 5,000K : Ra \geq 80 R9

CCT : 2,700K / 3,000K / 3,500K / 4,000K / 5,000K

Color Tolerance Adjustment : SDCM \leq 3

Luminous Flux (lm) : 3,148 / 3,272 / 3,321 / 3,322 / 3,965

Power Consumption : 34.4W

Note :



MTRD 10
IP 20
REXMobius

REXLiTE[®]
瑞司照明系統

Origin : Taiwan

Color : Black / White

Beam Angle : 40° / 60°

Dimension (mm) : Ø122 x H165

Light Source : COB LED ARRAY

LED Specs : Ra \geq 90 R9 \geq 50 , 5,000K : Ra \geq 80 R9

CCT : 2,700K / 3,000K / 3,500K / 4,000K / 5,000K

Color Tolerance Adjustment : SDCM \leq 3

Luminous Flux (lm) : 1,020 / 1,062 / 1,076 / 1,278 / 1,285

Power Consumption : 12.2W

Note :



MTRD 20
IP 20
REXMobius

REXLiTE[®]
瑞司照明系統

Origin : Taiwan

Color : Black / White

Beam Angle : 40° / 60°

Dimension (mm) : Ø122 x H165

Light Source : COB LED ARRAY

LED Specs : Ra \geq 90 R9 \geq 50 , 5,000K : Ra \geq 80 R9

CCT : 2,700K / 3,000K / 3,500K / 4,000K / 5,000K

Color Tolerance Adjustment : SDCM \leq 3

Luminous Flux (lm) : 1,921 / 2,000 / 2,027 / 2,031 / 2,421

Power Consumption : 21.3W

Note :



MTIA 20
IP 65
REXMobius

REXLiTE[®]
瑞司照明系統

Origin : Taiwan

Color : Black / White

Beam Angle : 40° / 60°

Dimension (mm) : Ø150 x H180

Light Source : COB LED ARRAY

LED Specs : Ra \geq 90 R9 \geq 50 , 5,000K : Ra \geq 80 R9

CCT : 2,700K / 3,000K / 3,500K / 4,000K / 5,000K

Color Tolerance Adjustment : SDCM \leq 3

Luminous Flux (lm) : 2,062 / 2,144 / 2,175 / 2,176 / 2,597

Power Consumption : 20.5W

Note :



MTIA 30
IP 65
REXMobius

REXLiTE[®]
瑞司照明系統

Origin : Taiwan

Color : Black / White

Beam Angle : 40° / 60°

Dimension (mm) : Ø150 x H180

Light Source : COB LED ARRAY

LED Specs : Ra \geq 90 R9 \geq 50 , 5,000K : Ra \geq 80 R9

CCT : 2,700K / 3,000K / 3,500K / 4,000K / 5,000K

Color Tolerance Adjustment : SDCM \leq 3

Luminous Flux (lm) : 3,148 / 3,272 / 3,321 / 3,322 / 3,965

Power Consumption : 34.4W

Note :



MTIA 40
IP 65
REXMobius

REXLITE[®]
瑞司照明系統

Origin : Taiwan

Color : Black / White

Beam Angle : 40° / 60°

Dimension (mm) : Ø150 x H180

Light Source : COB LED ARRAY

LED Specs : Ra \geq 90 R9 \geq 50 , 5,000K : Ra \geq 80 R9

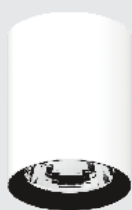
CCT : 2,700K / 3,000K / 3,500K / 4,000K / 5,000K

Color Tolerance Adjustment : SDCM \leq 3

Luminous Flux (lm) : 3,982 / 4,139 / 4,200 / 4,202 / 5,016

Power Consumption : 46.6W

Note :



MTRB 5S / 7S / 10S
IP 20
REXMobius

REXLITE[®]
瑞司照明系統

Origin : Taiwan

Color : Black / White

Beam Angle : 15° / 25° / 40°

Dimension (mm) : Ø52 × H80

Light Source : COB LED ARRAY

LED Specs : Ra ≥ 90 R9 ≥ 50

CCT : 2,700K / 3,000K / 4,000K / 5,000K

Color Tolerance Adjustment : SDCM ≤ 3

Luminous Flux (lm) : 480 / 495 / 510 / 510

625 / 635 / 660 / 660

955 / 980 / 1015 / 1015

Power Consumption : 5W / 7W / 10W

Note :



MTRB 5T / 7T / 10T
IP 20
REXMobius

REXLITE[®]
瑞司照明系統

Origin : Taiwan

Color : Black / White

Beam Angle : 15° / 25° / 40°

Dimension (mm) : Ø52 x W100 x H100

Light Source : COB LED ARRAY

LED Specs : Ra \geq 90 R9 \geq 50

CCT : 2,700K / 3,000K / 4,000K / 5,000K

Color Tolerance Adjustment : SDCM \leq 3

Luminous Flux (lm) : 480 / 495 / 510 / 510

625 / 635 / 660 / 660

955 / 980 / 1015 / 1015

Power Consumption : 5W / 7W / 10W

Note :



MTRB 5P / 7P / 10P
IP 20
REXMobius

REXLITE[®]
瑞司照明系統

Origin : Taiwan

Color : Black / White

Beam Angle : 15° / 25° / 40°

Dimension (mm) : Ø52 x W100 x H1100

Light Source : COB LED ARRAY

LED Specs : Ra \geq 90 R9 \geq 50

CCT : 2,700K / 3,000K / 4,000K / 5,000K

Color Tolerance Adjustment : SDCM \leq 3

Luminous Flux (lm) : 480 / 495 / 510 / 510

625 / 635 / 660 / 660

955 / 980 / 1015 / 1015

Power Consumption : 5W / 7W / 10W

Note :



MTRA 15 S
IP 20
REXMobius

REXLiTE[®]
瑞司照明系統

Origin : Taiwan

Color : Black / White

Beam Angle : 15° / 25° / 40° / 60°

Dimension (mm) : Ø52 × H155

Light Source : COB LED ARRAY

LED Specs : Ra ≥ 90 R9 ≥ 50 , 5,000K : Ra ≥ 80 R9

CCT : 2,700K / 3,000K / 3,500K / 4,000K / 5,000K

Color Tolerance Adjustment : SDCM ≤ 3

Luminous Flux (lm) : 1,407 / 1,470 / 1,508 / 1,514 / 1,860

Power Consumption : 14.9W

Note :



MTRA 15 T
IP 20
REXMobius

REXLiTE[®]
瑞司照明系統

Origin : Taiwan

Color : Black / White

Beam Angle : 15° / 25° / 40° / 60°

Dimension (mm) : Ø52 x W100 x H175

Light Source : COB LED ARRAY

LED Specs : Ra \geq 90 R9 \geq 50 • 5,000K : Ra \geq 80 R9

CCT : 2,700K / 3,000K / 3,500K / 4,000K / 5,000K

Color Tolerance Adjustment : SDCM \leq 3

Luminous Flux (lm) : 1,407 / 1,470 / 1,508 / 1,514 / 1,860

Power Consumption : 14.9W

Note :



MTRA 15 P
IP 20
REXMobius

REXLiTE[®]
瑞司照明系統

Origin : Taiwan

Color : Black / White

Beam Angle : 15° / 25° / 40° / 60°

Dimension (mm) : Ø52 x W100 x H1175

Light Source : COB LED ARRAY

LED Specs : Ra \geq 90 R9 \geq 50 , 5,000K : Ra \geq 80 R9

CCT : 2,700K / 3,000K / 3,500K / 4,000K / 5,000K

Color Tolerance Adjustment : SDCM \leq 3

Luminous Flux (lm) : 1,407 / 1,470 / 1,508 / 1,514 / 1,860

Power Consumption : 14.9W

Note :



MTAF 14 S
IP 20
REXMobius

REXLiTE[®]
瑞司照明系統

Origin : Taiwan

Color : Black / White

Beam Angle : 15° / 25° / 40°

Dimension (mm) : Ø62 × H85

Light Source : COB LED ARRAY

LED Specs : Ra \geq 90 R9 \geq 50

CCT : 2,700K / 3,000K / 4,000K / 5,000K

Color Tolerance Adjustment : SDCM \leq 3

Luminous Flux (lm) : 1,245 / 1,280 / 1,330 / 1,330

Power Consumption : 13.8W

Note :



MTAF 14 T
IP 20
REXMobius

REXLiTE[®]
瑞司照明系統

Origin : Taiwan

Color : Black / White

Beam Angle : 15° / 25° / 40°

Dimension (mm) : Ø62 x W100 x H105

Light Source : COB LED ARRAY

LED Specs : Ra \geq 90 R9 \geq 50

CCT : 2,700K / 3,000K / 4,000K / 5,000K

Color Tolerance Adjustment : SDCM \leq 3

Luminous Flux (lm) : 1,245 / 1,280 / 1,330 / 1,330

Power Consumption : 13.8W

Note :



MTAE 14 P
IP 20
REXMobius

REXLiTE[®]
瑞司照明系統

Origin : Taiwan

Color : Black / White

Beam Angle : 15° / 25° / 40°

Dimension (mm) : Ø62 x W100 x H1105

Light Source : COB LED ARRAY

LED Specs : Ra \geq 90 R9 \geq 50

CCT : 2,700K / 3,000K / 4,000K / 5,000K

Color Tolerance Adjustment : SDCM \leq 3

Luminous Flux (lm) : 1,245 / 1,280 / 1,330 / 1,330

Power Consumption : 13.8W

Note :



MTAE 20 S
IP 20
REXMobius

REXLITE[®]
瑞司照明系統

Origin : Taiwan

Color : Black / White

Beam Angle : 15° / 25° / 40° / 60°

Dimension (mm) : Ø62 x H160

Light Source : COB LED ARRAY

LED Specs : Ra \geq 90 R9 \geq 50 , 5,000K : Ra \geq 80 R9

CCT : 2,700K / 3,000K / 3,500K / 4,000K / 5,000K

Color Tolerance Adjustment : SDCM \leq 3

Luminous Flux (lm) : 1,921 / 2,000 / 2,027 / 2,031 / 2,421

Power Consumption : 21.3W

Note :



MTAE 20 T
IP 20
REXMobius

REXLITE[®]
瑞司照明系統

Origin : Taiwan

Color : Black / White

Beam Angle : 15° / 25° / 40° / 60°

Dimension (mm) : Ø62 x W100 x H180

Light Source : COB LED ARRAY

LED Specs : Ra ≥ 90 R9 ≥ 50 , 5,000K : Ra ≥ 80 R9

CCT : 2,700K / 3,000K / 3,500K / 4,000K / 5,000K

Color Tolerance Adjustment : SDCM ≤ 3

Luminous Flux (lm) : 1,921 / 2,000 / 2,027 / 2,031 / 2,421

Power Consumption : 21.3W

Note :



MTAE 20 P
IP 20
REXMobius

REXLITE[®]
瑞司照明系統

Origin : Taiwan

Color : Black / White

Beam Angle : 15° / 25° / 40° / 60°

Dimension (mm) : Ø62 x W100 x H1180

Light Source : COB LED ARRAY

LED Specs : Ra \geq 90 R9 \geq 50 , 5,000K : Ra \geq 80 R9

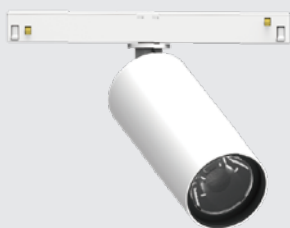
CCT : 2,700K / 3,000K / 3,500K / 4,000K / 5,000K

Color Tolerance Adjustment : SDCM \leq 3

Luminous Flux (lm) : 1,921 / 2,000 / 2,027 / 2,031 / 2,421

Power Consumption : 21.3W

Note :



MTRA 13 LV / MTRA 13 LV PLUS
IP 20
REXMobius

REXLiTE[®]
瑞司照明系統

Origin : Taiwan

Color : Black / White

Beam Angle : 15° / 25° / 40°

Dimension (mm) : Ø52 × W70 × H139

Ø52 × W70 × H146

Light Source : COB LED ARRAY

LED Specs : Ra ≥ 90 R9 ≥ 50 , 5,000K : Ra ≥ 80 R9

CCT : 2,700K / 3,000K / 3,500K / 4,000K / 5,000K

Color Tolerance Adjustment : SDCM ≤ 3

Luminous Flux (lm) : 1393 / 1450 / 1470 / 1473 / 1756

Power Consumption : 14.4W

Note :

REXLiTE[®]

瑞司照明系統

FISHBONE Design

觀境設計股份有限公司



REXLiTE[®]



CASAMBI

TCI^{en}

GLOBAL^{en}

ZUSU

techno

STEAB

41263 台中市大里區
西湖路187巷108號(總公司)
No.108, Ln.187, Xihu Rd., Dali Dist.,
Taichung City 41263, Taiwan (Headquarter)

40854 台中市南屯區
文心南路39號 (Showroom)
No. 39, Wenxin S. Rd., Nantun Dist.,
Taichung City 408, Taiwan

10658 台北市大安區
建國南路二段69巷56號 (Showroom)
No.56, Ln. 69, Sec. 2, Jianguo S. Rd., Da' an Dist.,
Taipei City 10658, Taiwan

+886-4-2496-4053

+886-4-2496-0497

www.rexlite.com.tw

REXLiTE

rexlite.tw

客服專線 TEL 0800-279-979