

REXLiTE[®]

2019
ISSUE



M9L
REXMode



REXLiTE[®]
瑞司照明系統

Origin : Taiwan

Note : Open Ø80 x H60 mm

Color : Black / White

Beam Angle : Spotlight, 10° / 24° / 38°

Dimension (mm) : Ø89 x H60

LED Source : NICHIA LED

LED Specs : Ra \geq 90 LM80 2,700K ~ 5,000K R9 > 50

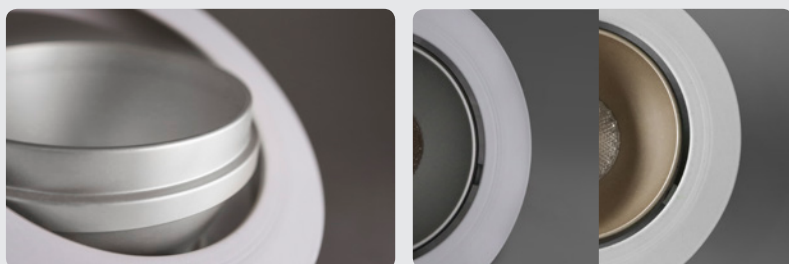
Color Tolerance Adjustment : SDCM \leq 2

Luminous Flux : 1,000 Lm

Power Consumption : 9W



M9M
REXMode



REXLiTE[®]
瑞司照明系統

Origin : Taiwan

Note : Open Ø80 x 80mm

Color : Black / White

Beam Angle : Spotlight, 10° / 24° / 38°

Dimension (mm) : Ø89 x H75

LED Source : NICHIA LED

LED Specs : Ra \geq 90 LM80 2,700K ~ 5,000K R9>50

Color Tolerance Adjustment : SDCM \leq 2

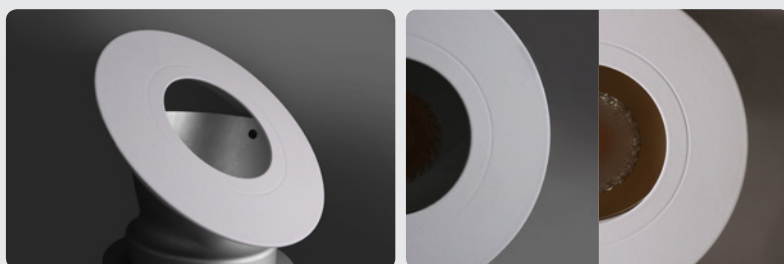
Luminous Flux : 940 Lm

Power Consumption : 9W



M9S
REXMode

REXLiTE[®]
瑞司照明系統



Origin : Taiwan

Note : Open \varnothing 70 x H80mm

Color : Black / White

Beam Angle : Spotlight, 10° / 24° / 38°

Dimension (mm) : \varnothing 75 x H75

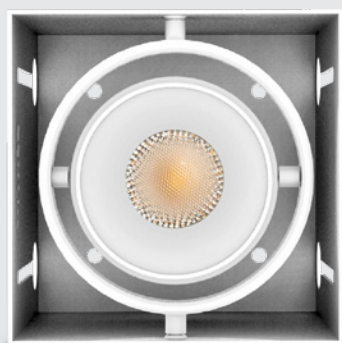
LED Source : NICHIA LED

LED Specs : Ra \geq 90 LM80 2,700K ~ 5,000K R9>50

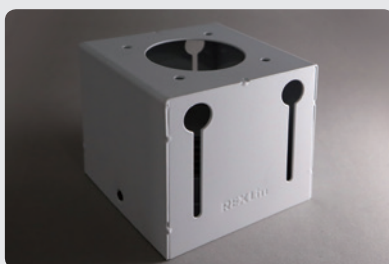
Color Tolerance Adjustment : SDCM \leq 2

Luminous Flux : 720 Lm

Power Consumption : 9W



M9-N1 / N2 / N3
REXMode



REXLiTE®
瑞司照明系統

Origin : Taiwan

Color : Black / White

Beam Angle : Spotlight, 10° / 24° / 38°

Dimension (mm) : L 95 × W95 × H90

L190 × W95 × H90

L285 × W95 × H90

LED Source : NICHIA LED

LED Specs : Ra ≥ 90 LM80 2,700K ~ 5,000K R9>50

Color Tolerance Adjustment : SDCM ≤ 2

Luminous Flux : 1,000 Lm / 2,000 Lm / 3,000 Lm

Power Consumption : 9W / 18W / 27W

Bore Dimension (mm) : L 97 × W97 × H90

L192 × W97 × H90

L287 × W97 × H90

Note : Low Glare

Two Axis Rotary



REXCypher Series

05



C5
REXCypher

REXlite[®]
瑞司照明系統



Origin : Taiwan

Color : White

Beam Angle : Flood

Dimension (mm) : $\varnothing 150 \times H36$

LED Source : NICHIA LED

LED Specs : $R_a \geq 90$ LM80 2,700K ~ 5,000K $R9 > 50$

Color Tolerance Adjustment : $SDCM \leq 3$

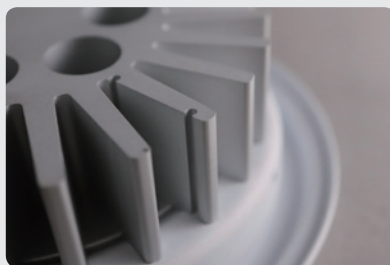
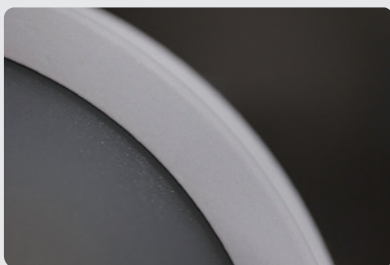
Luminous Flux : 1,520 Lm

Power Consumption : 14W

Note : Open $\varnothing 135 \times H40$ mm



C1
REXCypher



REXLITE[®]
瑞司照明系統

Origin : Taiwan

Color : White

Beam Angle : Flood

Dimension (mm) : $\varnothing 111 \times H40$

LED Source : NICHIA LED

LED Specs : $R_a \geq 90$ LM80 2,700K ~ 5,000K $R_9 > 50$

Color Tolerance Adjustment : $SDCM \leq 3$

Luminous Flux : 820 Lm

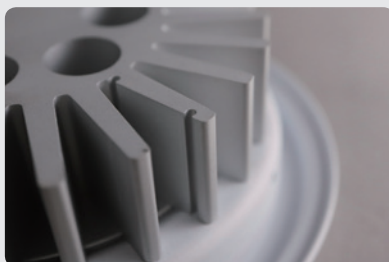
Power Consumption : 8.5W

Note : Open $\varnothing 105 \times H40$



A1
REXArtem

REXLiTE[®]
瑞司照明系統



Origin : Taiwan

Color : White

Beam Angle : AR111 Spotlight, 25°

Dimension (mm) : Ø111 x H35

LED Source : NICHIA LED

LED Specs : Ra \geq 90 LM80 2,700K ~ 5,000K R9>50

Color Tolerance Adjustment : SDCM \leq 3

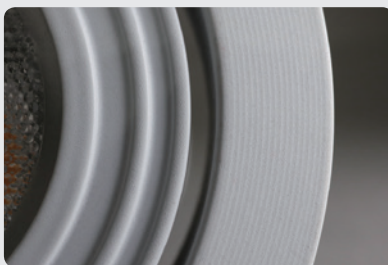
Luminous Flux : 700 Lm

Power Consumption : 8.5W

Note : Open Ø105 x H40mm



M5
REXMode



REXLiTE[®]
瑞司照明系統

Origin : Taiwan

Note : Open \varnothing 70 x H45mm

Color : Black / White / Aluminum

Beam Angle : Spotlight, 25° / 40°

Dimension (mm) : \varnothing 80 x H45

LED Source : NICHIA LED

LED Specs : Ra \geq 90 LM80 2,700K ~ 5,000K R9>50

Color Tolerance Adjustment : SDCM \leq 3

Luminous Flux : 475 Lm

Power Consumption : 5.5W



M2
REXMini



REXLiTE[®]
瑞司照明系統

Origin : Taiwan

Color : Aluminum

Beam Angle : Spotlight, 25°

Dimension (mm) : Ø49 × H30

LED Source : NICHIA LED

LED Specs : Ra ≥ 90 LM80 2,700K ~ 5,000K R9>50

Color Tolerance Adjustment : SDCM ≤ 3

Luminous Flux : 100Lm

Power Consumption : 1.5W

Note : Open Ø45 × H35mm



QA1-N1 / N2 / N3
QubicArtem

REXLITE®
瑞司照明系統



Origin : Taiwan

Color : Black / White

Beam Angle : Spotlight, 25°

Dimension (mm) : L150 x W150 x H100

L300 x W150 x H100

L450 x W150 x H100

Luminous Flux : 700 / 1,400 / 2,400 Lm

Power Consumption : 8.5 / 17 / 25.5 W

Bore Dimension (mm) : L152 x W152 x H120

L302 x W152 x H120

L452 x W152 x H120

Note :

LED Source : NICHIA LED

LED Specs : Ra ≥ 90 LM80 2,700K ~ 5,000K R9>50

Color Tolerance Adjustment : SDCM ≤ 3



QC1-N1 / N2 / N3
QubicCypher

REXLiTE[®]
瑞司照明系統



Origin : Taiwan

Color : Black / White

Beam Angle : Flood

Dimension (mm) : L150 x W150 x H100

L300 x W150 x H100

L450 x W150 x H100

Luminous Flux : 820 Lm / 1,640 Lm / 2,750 Lm

Power Consumption : 8.5W / 17W / 25.5W

Bore Dimension (mm) : L152 x W152 x H120

L302 x W152 x H120

L452 x W152 x H120

Note :

LED Source : NICHIA LED

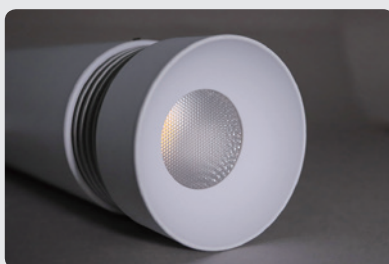
LED Specs : Ra \geq 90 LM80 2,700K ~ 5,000K R9 > 50

Color Tolerance Adjustment : SDCM \leq 3



M9-T
REXMode

REXLiTE[®]
瑞司照明系統



Origin : Taiwan

Color : Black / White

Beam Angle : Spotlight, 10° / 24° / 38°

Dimension (mm) : Ø60 x W185 x H150

LED Source : NICHIA LED

LED Specs : Ra \geq 90 LM80 2,700K ~ 5,000K R9 > 50

Color Tolerance Adjustment : SDCM \leq 2

Luminous Flux : 1,000 Lm

Power Consumption : 9W

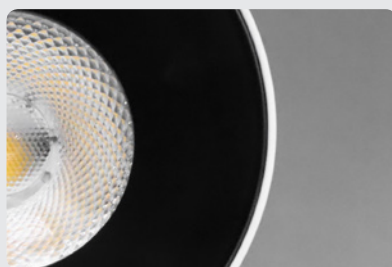
Note : 2 / 4 / 6 wires tracking system

QubicCypher Series



QC9N
QubicCypher

REXLiTE[®]
瑞司照明系統



Origin :

Color : White / Black

Beam Angle : 15° / 24° / 36°

Dimension (mm) : Ø 100 × H100 mm

LED Specs : Ra \geq 90 3,000K / 4,000K

Color Tolerance Adjustment : SDCM \leq 3

Luminous Flux : 650 Lm

Power Consumption : 9W

Note :

QubicCypher Series



QC16N
QubicCypher

REXLITE[®]
瑞司照明系統



Origin :

Color : White / Black

Beam Angle : 15° / 24° / 36°

Dimension (mm) : Ø 134 × H123 mm

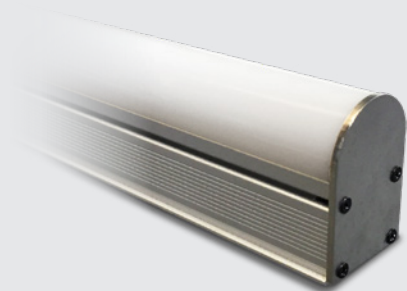
LED Specs : Ra \geq 90 3,000K / 4,000K

Color Tolerance Adjustment : SDCM \leq 3

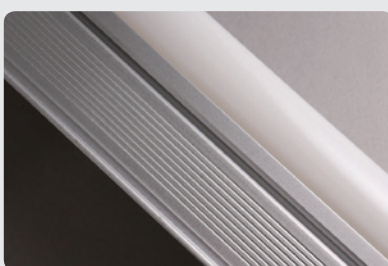
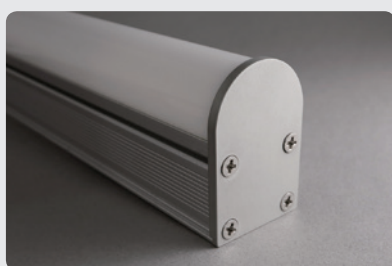
Luminous Flux : 1200 Lm

Power Consumption : 16W

Note :



E1R / E2R / E3R / E4R
IP68
REXEmi



Origin : Taiwan

Color : Aluminum

Beam Angle : Linear Flood Light

Dimension (mm) : L 300 x W32 x H47

L 500 x W32 x H47

L 1,000 x W32 x H47

L 1,500 x W32 x H47

LED Source : NICHIA LED, RGB in one

LED Specs : R : 850 mcd / 550nm ~ 670nm @20mA

G : 2,000 mcd / 430nm ~ 640nm @20mA

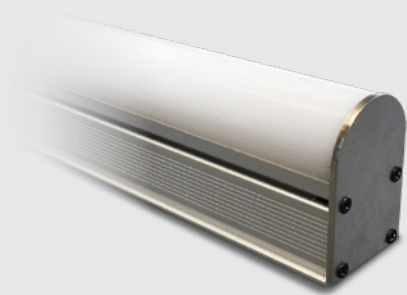
B : 400 mcd / 400nm ~ 570nm @20mA

Power Consumption : 14W / 23W / 46W / 68W

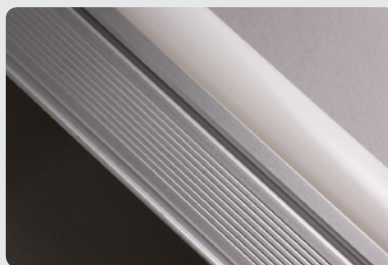
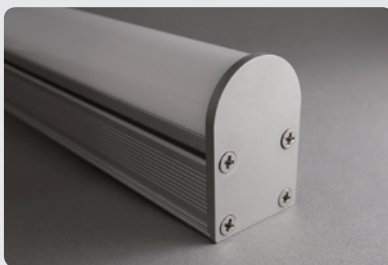
Note : Heat Sink Temp. < 70°C

IP68

DMX Control



E1W / E2W / E3W / E4W
IP68
REXEmi



REXLiTE®
瑞司照明系統

Origin : Taiwan

Color : Black / White

Beam Angle : Linear Flood Light

Dimension (mm) : L 300 x W32 x H47

L 500 x W32 x H47

L1,000 x W32 x H47

L1,500 x W32 x H47

LED Source : NICHIA LED

LED Specs : Ra \geq 90 LM80 2,700K ~ 5,000K R9 > 50

Color Tolerance Adjustment : SDCM \leq 2

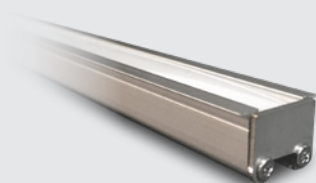
Luminous Flux : 300 Lm / 500 Lm / 1,000 Lm / 1,500 Lm

Power Consumption : 5W / 8W / 16W / 24W

Note : Heat Sink Temp. < 70°C

IP68

DMX Control



RN105 / RN110 / RN115 / RN120
REXNephia



Origin : Taiwan

Color : Aluminum

Beam Angle : Linear Light, Flood, Embedded

Dimension (mm) : L 507 x W15 x H10

L1,007 x W15 x H10

L1,507 x W15 x H10

L2,007 x W15 x H10

LED Source : NICHIA LED

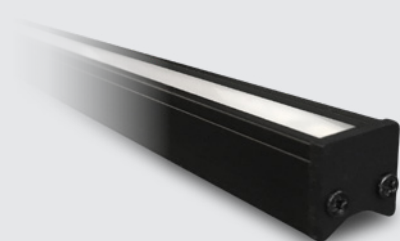
LED Specs : Ra \geq 90 LM80 2,700K ~ 5,000K R9>50

Color Tolerance Adjustment : SDCM \leq 3

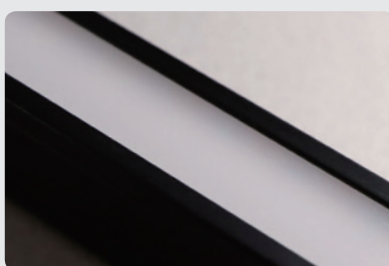
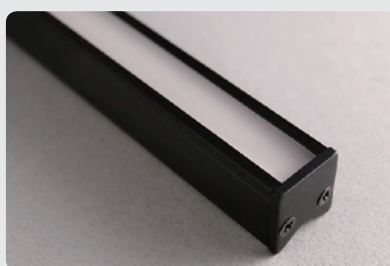
Luminous Flux : 680 Lm / 1,360Lm / 2,040Lm / 2,720Lm

Power Consumption : 3.5W / 7W / 10.5W / 14W

Note : Open L x W | 1.8 x H > 18mm



RN205 / RN210 / RN215 / RN220
REXNephia



REXLiTE[®]
瑞司照明系統

Origin : Taiwan

Color : Black

Beam Angle : Linear Light, Flood, Embedded / Suspension

Dimension (mm) : L 509 × W13.5 × H14.2

L1,009 × W13.5 × H14.2

L1,509 × W13.5 × H14.2

L2,009 × W13.5 × H14.2

LED Source : NICHIA LED

LED Specs : Ra ≥ 90 LM80 2,700K ~ 5,000K R9>50

Color TolCerance Adjustment : SDCM ≤ 3

Luminous Flux : 680 Lm / 1,360 Lm / 2,040 Lm / 2,720 Lm

Power Consumption : 3.5W / 7W / 10.5W / 14W

Note : Open L × W13.5 × H>14.2mm



RN405 / RN410 / RN415 / RN420
REXNephia



REXLITE®
瑞司照明系統

Origin : Taiwan

Color : Black

Beam Angle : Linear Light, Flood, Embedded / Suspension

Dimension (mm) : L 509 x W31 x H30

L1,009 x W31 x H30

L1,509 x W31 x H30

L2,009 x W31 x H30

LED Source : NICHIA LED

LED Specs : Ra \geq 90 LM80 2,700K ~ 5,000K R9>50

Color Tolerance Adjustment : SDCM \leq 3

Luminous Flux : 1,360 Lm / 2,040 Lm / 2,720 Lm / 5,440 Lm

Power Consumption : 7W / 14W / 21W / 28W

Note : Open L x W31 x H>38mm

REXLinac Series



L1 / L2 / L3 / L4
REXLinac



REXLiTE[®]
瑞司照明系統

Origin : Taiwan

Color : Champagne

Beam Angle : Linear Light, 120°

Dimension (mm) : L 295 x W33 x H15

L 595 x W33 x H15

L 885 x W33 x H15

L 1,185 x W33 x H15

LED Source : NICHIA LED

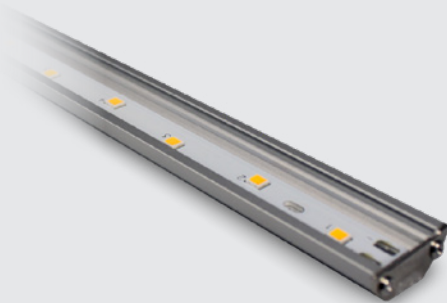
LED Specs : Ra ≥ 90 LM80 2,700K ~ 5,000K R9>50

Color Tolerance Adjustment : SDCM ≤ 3

Luminous Flux : 710 Lm / 1,420 Lm / 2,130 Lm / 2,840 Lm

Power Consumption : 7W / 14W / 21W / 28W

Note :



QL1 / QL2 / QL3 / QL4
QubicLine



Origin : Taiwan

Color : Frosted Aluminum

Beam Angle : Linear Light, 120°

Dimension (mm) : L 285 × W20 × H8

L 585 × W20 × H8

L 800 × W20 × H8

L 1,170 × W20 × H8

LED Source : NICHIA LED

LED Specs : Ra ≥ 90 LM80 2,700K ~ 5,000K R9>50

Color Tolerance Adjustment : SDCM ≤ 3

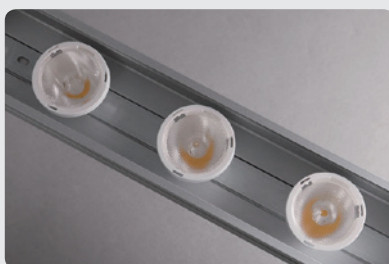
Luminous Flux : 350 Lm / 700 Lm / 1,050 Lm / 1,750 Lm

Power Consumption : 3.5W / 7W / 10.5W / 14W

Note :



RH1 / RH2 / RH3 / RH4
IP68
REXHiking



Origin : Taiwan

Color : Aluminum

Beam Angle : Outdoor Spotlight, 25° / 40° / 80° / Wall wash

Dimension (mm) : L 295 x W60 x H85

L 595 x W60 x H85

L 895 x W60 x H85

L 1,195 x W60 x H85

LED Source : NICHIA LED

LED Specs : Ra \geq 90 LM80 2,700K ~ 5,000K R9>50

LED Specs : Ra \geq 90 LM80 2,700K ~ 5,000K R9>50

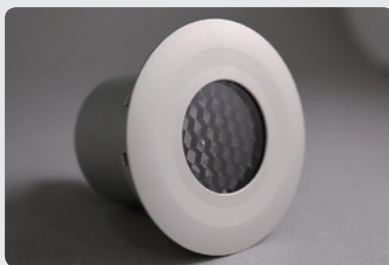
Luminous Flux : 585Lm / 1,170 Lm / 1,755Lm / 2,340 Lm

Power Consumption : 7W / 14W / 21W / 28W

Note : IP68



MG2
IP65
REXMini



REXLiTE[®]
瑞司照明系統

Origin : Taiwan

Color : Black / White / Aluminum

Beam Angle : Spotlight, 25°

Dimension (mm) : Ø49 x H65

LED Source : NICHIA LED

Color Tolerance Adjustment : SDCM ≤ 3

LED Specs : Ra ≥ 90 LM80 2,700K ~ 5,000K R9>50

Luminous Flux : 100 Lm

Power Consumption : 1.5W

Note : Open Ø45 x H 75mm

IP65



QG2
IP68
QubicGuard



REXLITE[®]
瑞司照明系統

Origin : Taiwan

Color : Stainless Steel

Beam Angle : Flood Ground Light

Dimension (mm) : Ø100 x H70

LED Source : NICHIA LED

LED Specs : Ra \geq 90 LM80 2,700K ~ 5,000K R9>50

Luminous Flux : 100 Lm

Power Consumption : 1.5W

Note : Open Ø90 x 65mm

IP68



RS
IP68
REXStream



Origin : Taiwan

Color : Transparent

Beam Angle : Soft Strip Light, 120°

Dimension (mm) : L x W 12 x H6

LED Source : NICHIA LED, Mono color

LED Specs : Ra \geq 90 LM80 2,700K ~ 5,000K / Color R9 > 50

Color Tolerance Adjustment : SDCM \leq 3

Luminous Flux : 450 Lm / 1300Lm

Power Consumption : 5W / M ; 15W / M

Note : Mono color

Soft Strip Light

Silicone Tube

IP68

REXLITE[®]
瑞司照明系統

FISHBONE Design **觀境設計股份有限公司**



REXLITE[®]



powered by
TRIDONIC



41263 台中市大里區
西湖路187巷108號(總公司)
No.108, Ln.187, Xihu Rd., Dali Dist.,
Taichung City 41263, Taiwan (Headquarters)

10658 台北市大安區
建國南路二段69巷56號
No.56, Ln. 69, Sec. 2, Jianguo S. Rd., Da' an Dist.,
Taipei City 10658, Taiwan

T +886-4-2496-4053
+886-2-2706-0050

F +886-4-2496-0497
+886-2-2706-0016

W www.rexlite.com.tw